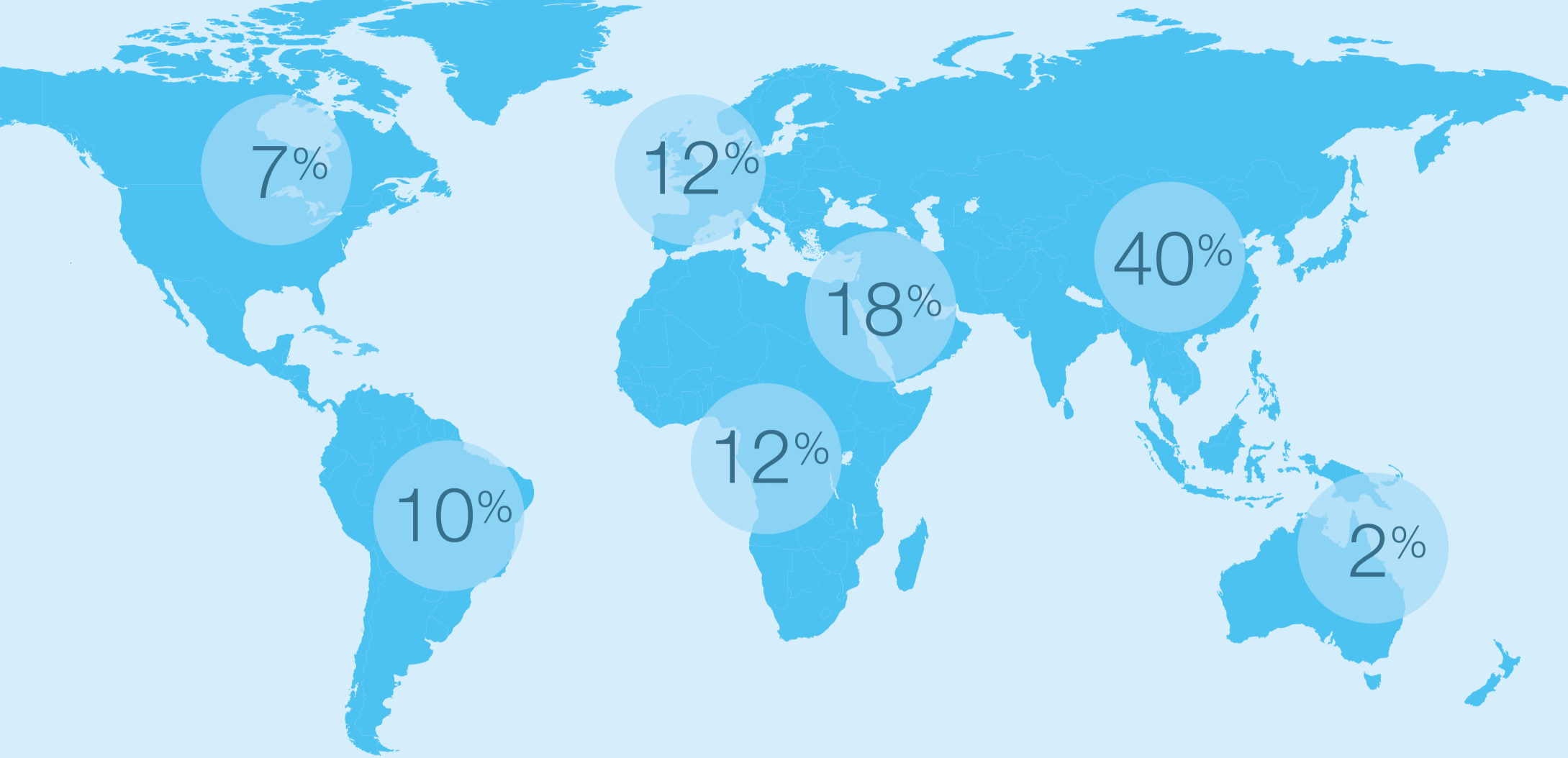


ISN survey in 2016 – what you told us

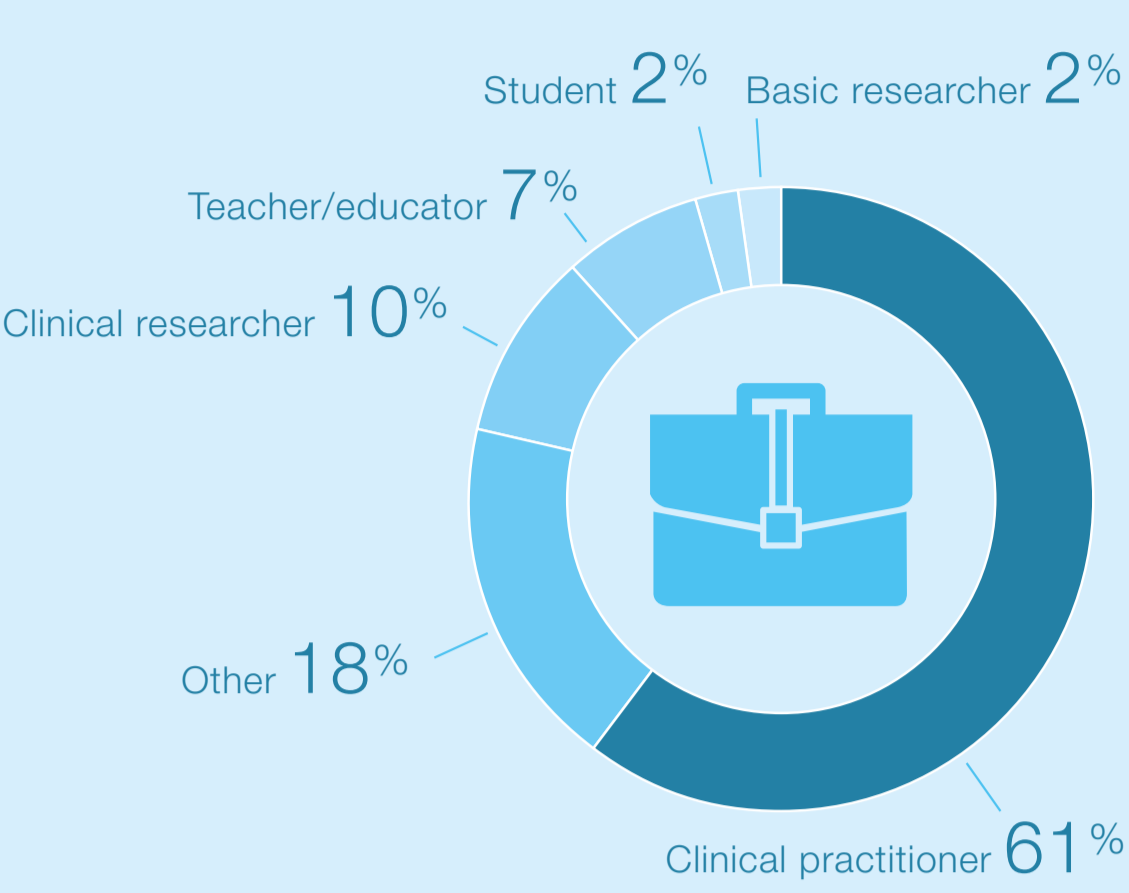


Sharing your views on being an ISN member, we can build a better Society for you and strive towards advancing nephrology worldwide.

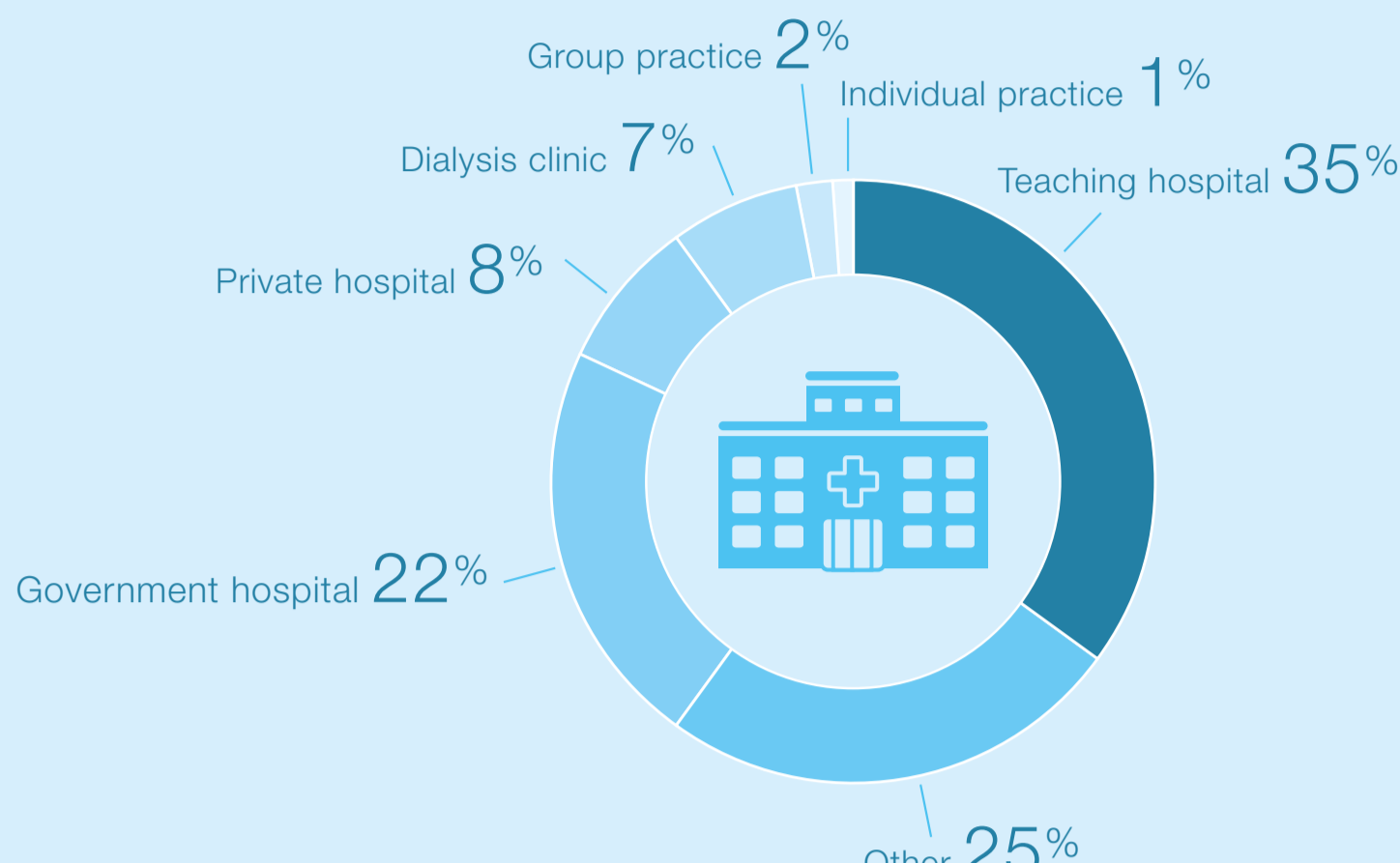
Who are you and where are you from?



What is your main occupation?



What is your primary practice setting?



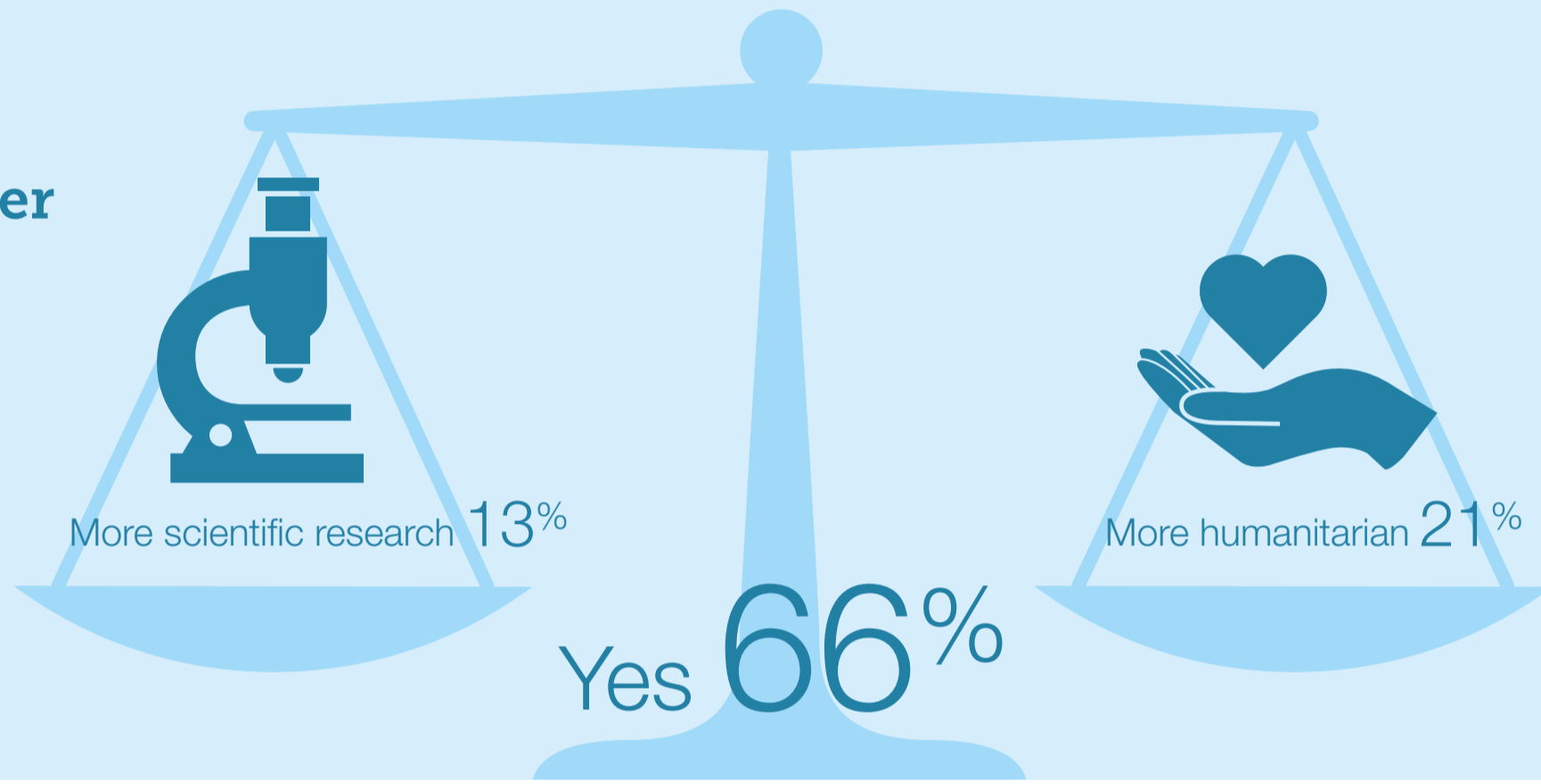
ISN offers the latest and broadest knowledge about kidney research and patient care. This is why more than 90% of you are happy with the expertise, programs and information we provide.



Top reasons you joined ISN

- 1 Access to ISN's scientific journals
- 2 Support ISN's mission
- 3 ISN's educational portal
- 4 ISN newsletters
- 5 Reduced fees to ISN events
- 6 Contribute to ISN Programs
- 7 Benefit from ISN Programs

66% of you believe we have the balance right between the number of scientific and humanitarian activities.



Best member benefits

When it comes to member benefits, print and online publications continue to be the most valuable to you, followed by access to ISN online education material such as webinars, presentations, articles, cases and guidelines.

- Print and online versions of *Kidney International*, *KI Supplements*, *KI Reports* and *ISN Education*
- Access to CMEs and other training
- Contributing to ISN Programs and support sustainable capacity building in emerging countries

How valuable are the different ISN Programs?

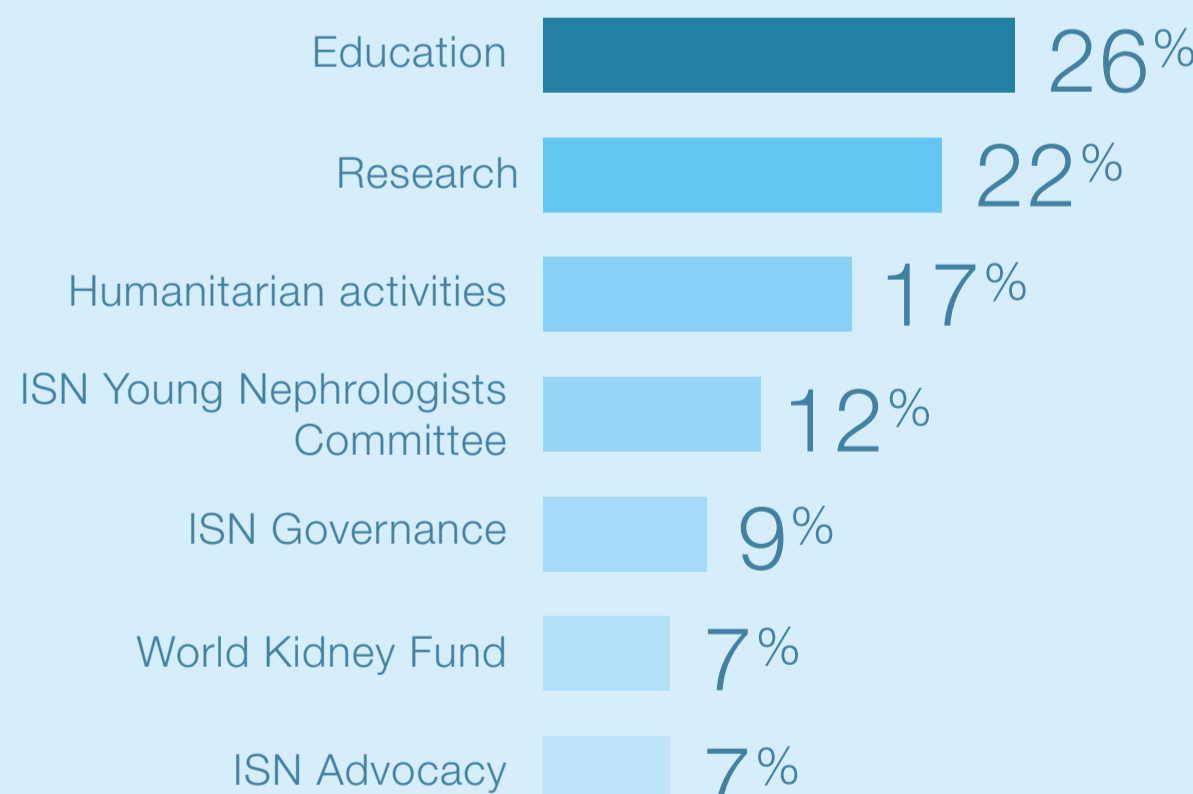
- 1 Continuing Medical Education
- 2 Clinical Research
- 3 Fellowship
- 4 Educational Ambassadors
- 5 Sister Renal Centers and Sister Transplant Centers

60% of you are somewhat to very involved in ISN as a Society.



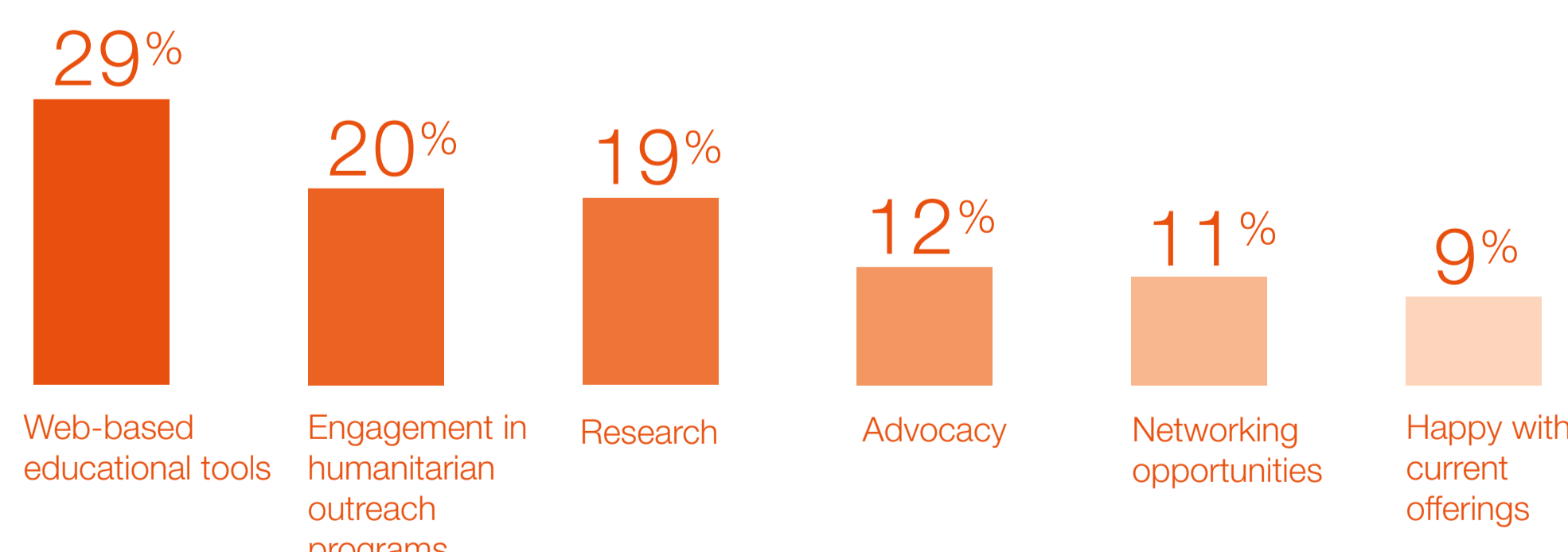
42% of you see yourselves engaged in educational and humanitarian activities in the future.

Thank you for your commitment in supporting the efforts of our community to improve kidney care across all regions.



Which activities would you like us to develop more?

Your feedback has allowed us to understand what you enjoy the most about ISN, helping us to focus more on educational activities in the future.



According to you, what should the focus of ISN education be in the future?

- 1 Guidelines
- 2 Webinars
- 3 E-learning modules, clinical cases
- 4 Presentations from events
- 5 Scientific article reviews
- 6 Clinical cases
- 7 Certification
- 8 Curricula development

Global Operations Center
Rue des Fabriques 1
1000 Brussels, Belgium
Tel: +32 2 808 04 20
Fax: +32 2 808 4454

Americas Operations Center
340 North Avenue 3rd Floor
Cranford, NJ 07016-2496, United States
Tel: +1 567 248 9703
Fax: +1 908 272 7101

