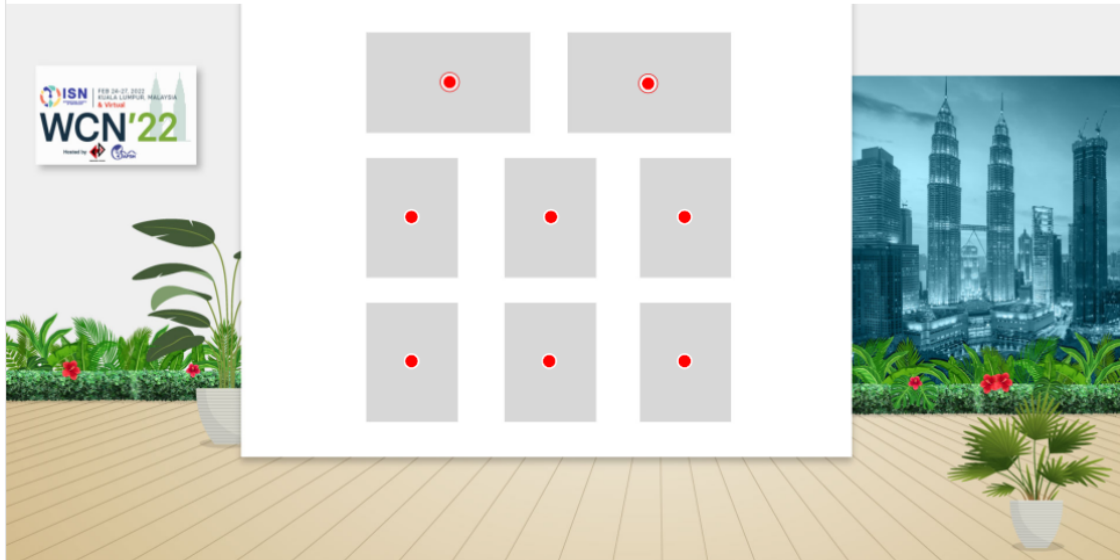


Two Star Booth



## International Society of Nephrology

LEAVE QUESTION OR COMMENT...



COMPANY DESCRIPTION

PDFS

BOOTH PERSONNEL

VIDEO 1

VIDEO 2

### Vision

Since 1960, the ISN has promoted and worked toward a future where all people have equitable access to sustainable kidney health.

### Mission

The International Society of Nephrology (ISN) is a global professional association dedicated to advancing kidney health worldwide since 1960 through education, grants, research, and advocacy.

We do this for all our stakeholders by:

- BRIDGING THE GAPS of available care through advocacy and collaborations with our global partners
- BUILDING CAPACITY in healthcare professionals via granting programs, education and research
- CONNECTING OUR COMMUNITY to develop a stronger understanding of the management of kidney disease.

The ISN, through its members and in collaboration with national and regional societies, engages 30,000 health professionals from across the globe to reduce the burden of kidney diseases and provide optimal health care for patients.

### Values

The ISN pledges to:

- Focus its activities solely upon improving global kidney health.
- Be knowledgeable, efficient, and dependable to lead its mission effectively.
- Recognize that goals can only be achieved through a network of stakeholders that help build and leverage our capabilities.
- Be an inclusive partner collaborating transparently to create value for others.
- Be innovative, resourceful, and open to change.

Read the ISN strategic plan, 2018-2023

### Diversity Statement

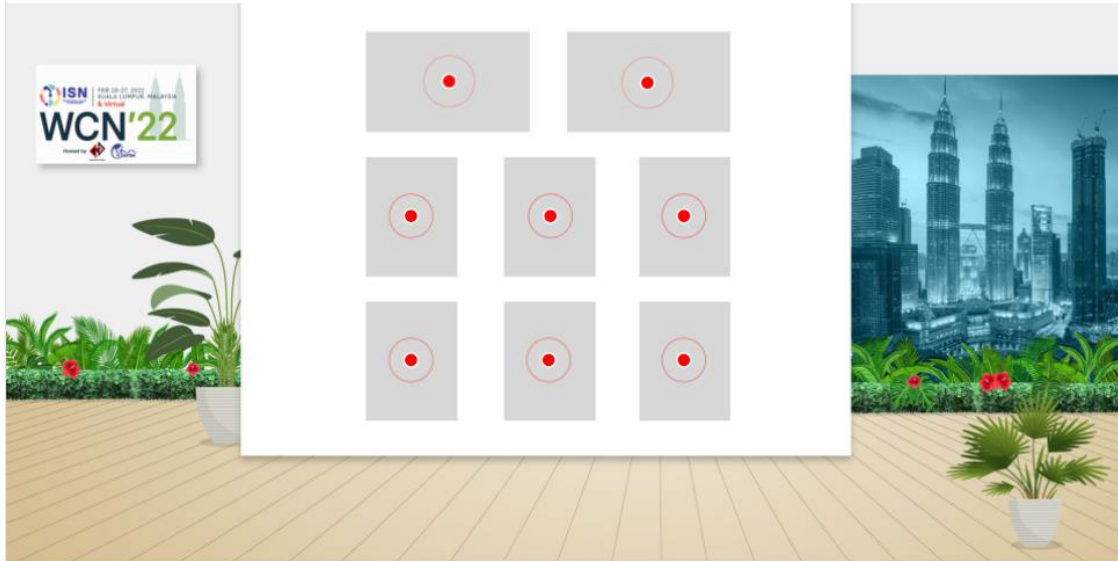
The International Society of Nephrology (ISN) embraces the principles of diversity and believes that inclusivity fosters the creativity, innovation, and excellence needed to achieve the mission of advancing kidney health worldwide.

Read the ISN Position Statement on Diversity.

### Contact

Alexandra Kelley  
Avenue des Arts 1-2  
B-1210 Brussels  
Belgium  
Email: [akelley@theisn.org](mailto:akelley@theisn.org)  
Website: <https://www.theisn.org/wcn>

Your logo here  
960w x 540h



COMPANY DESCRIPTION

PDFS

BOOTH PERSONNEL

VIDEO 1

VIDEO 2

Your  
product  
image here  
750w x 1000h

Your  
product  
image here  
750w x 1000h

Your  
product  
image here  
750w x 1000h

Your  
product  
image here  
750w x 1000h

Your  
product  
image here  
750w x 1000h

Your  
product  
image here  
750w x 1000h

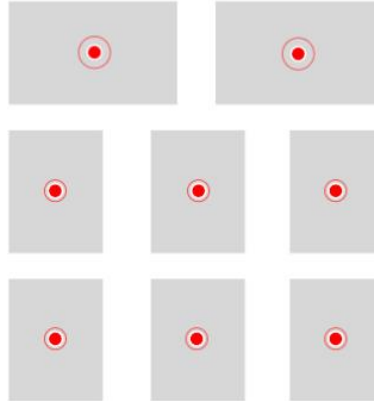
Contact

Alexandra Kelley  
Avenue des Arts 1-2  
B-1210 Brussels  
Belgium  
Email: [akelley@rheien.org](mailto:akelley@rheien.org)  
Website: <https://www.rheien.org/wcn>

Your logo here  
960w x 540h

## International Society of Nephrology

LEAVE QUESTION OR COMMENT...



COMPANY DESCRIPTION

PDFS

BOOTH PERSONNEL

VIDEO 1

VIDEO 2



**John Doe**  
Head of Management

John Doe has been the head of Management in the nephrology department at the Clinic for 16 years and has great dedication to advancing kidney health worldwide.



0987654321



doe@theclinic.org



**Josephine Doe**  
Director

Josephine Doe has been the Director in the nephrology department at the Clinic for 10 years and has great dedication to advancing kidney health worldwide.



0987654321



josephine@theclinic.org



**Mark Doe**  
Manager

Mark Doe has been in Management in the nephrology department at the Clinic for 9 years and has great dedication to advancing kidney health worldwide.



0987654321



mark@theclinic.org

### Contact

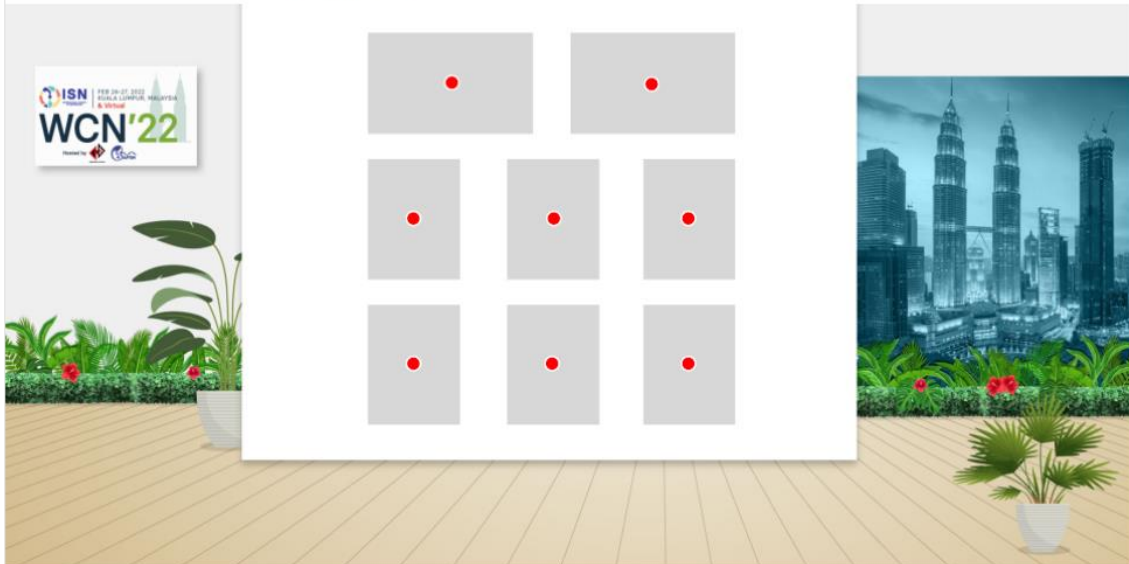
Alexandra Kelley  
Avenue des Arts 1-2  
B-1210 Brussels  
Belgium  
Email: [akelley@theisn.org](mailto:akelley@theisn.org)  
Website: <https://www.theisn.org/wcn>

Your logo here  
960w x 540h



## International Society of Nephrology

LEAVE QUESTION OR COMMENT...



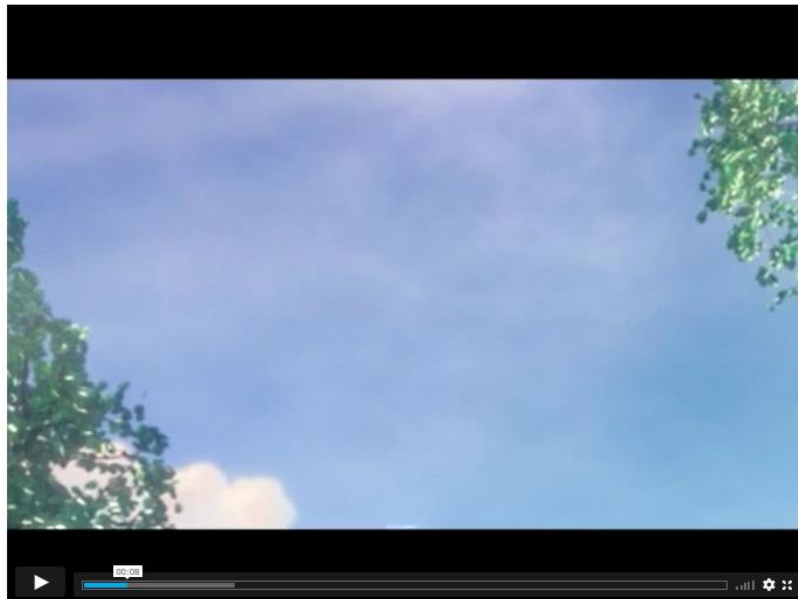
COMPANY DESCRIPTION

PDFS

BOOTH PERSONNEL

VIDEO 1

VIDEO 2



### Contact

Alexandra Kelley  
Avenue des Arts 1-2  
B-1210 Brussels  
Belgium  
Email: [akelley@theisn.org](mailto:akelley@theisn.org)  
Website: <https://www.theisn.org/wcn>

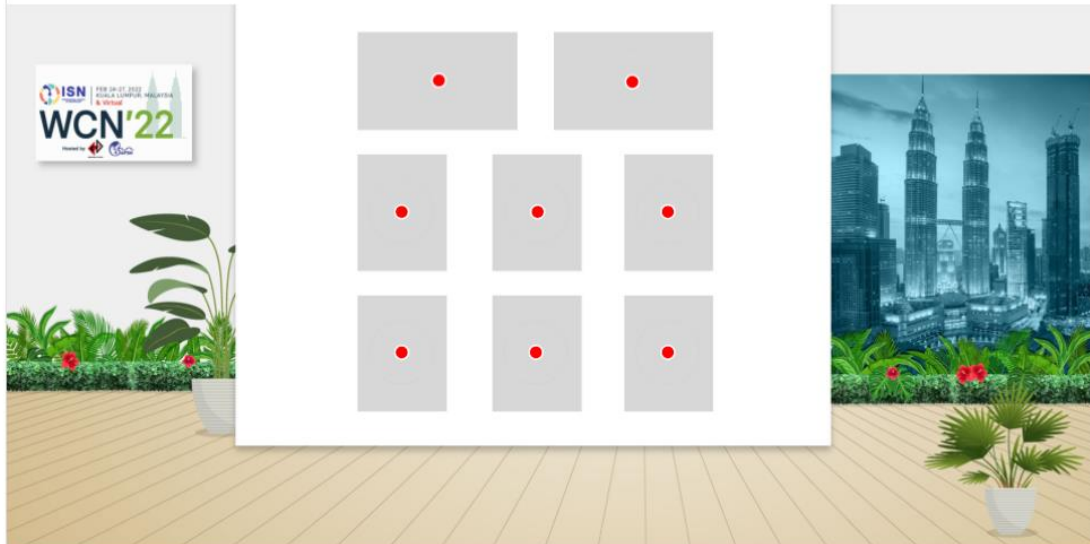
Your logo here  
960w x 540h





## International Society of Nephrology

LEAVE QUESTION OR COMMENT...



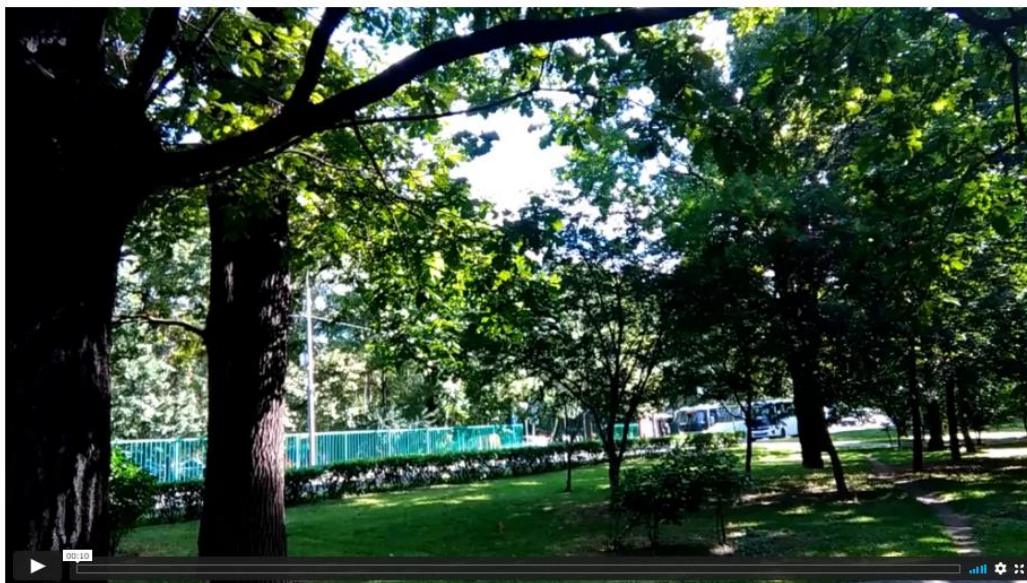
COMPANY DESCRIPTION

PDFS

BOOTH PERSONNEL

VIDEO 1

VIDEO 2



### Contact

Alexandra Kelley  
Avenue des Arts 1-2  
B-1210 Brussels  
Belgium  
Email: [akelley@theisn.org](mailto:akelley@theisn.org)  
Website: <https://www.theisn.org/wcn>

Your logo here  
960w x 540h