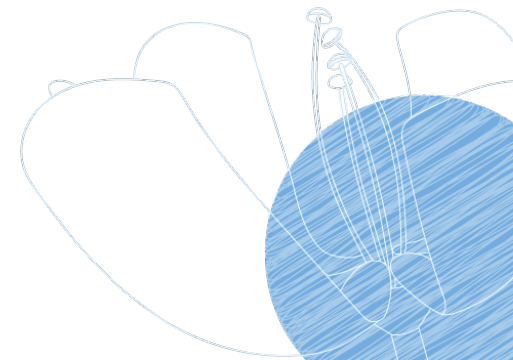




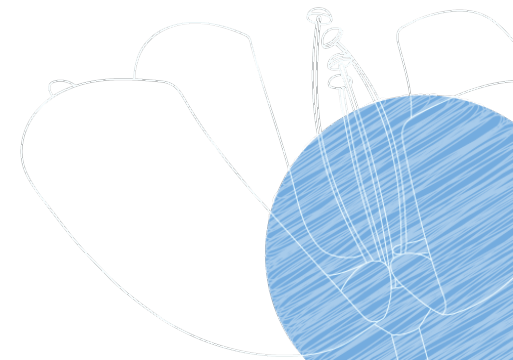
ISN WORLD CONGRESS OF NEPHROLOGY
APRIL 13-16, 2024 | BUENOS AIRES, ARGENTINA

WELCOME



AGENDA

- Planning tools
- Main contacts
- Congress details
- Schedule
- Shell scheme booths
- Customized booths
- Floorplan
- Congress highlights
- Registrations
- Promotion
- Q&A



MAIN TOOLS TO HELP YOU PREPARE

Planning Manual

Welcome to the Industry Sessions Manual

Please find below the information you will need to plan your symposium or Spotlight Stage session at the World Congress of Nephrology 2024.

Any questions? Reach out to rblondel@theisn.org

- Contacts
- Forms
- Important Dates
- Spotlight Stage
- Symposium Information
- Program
- Promotion Included
- Additional Orders
- Presentations
- Registrations
- Q&A Webinars
- Accommodation and Travel

Mandatory Forms

It is mandatory for all symposium organizers to fill out the program submission form below before **February 9**.

[Submit program](#)

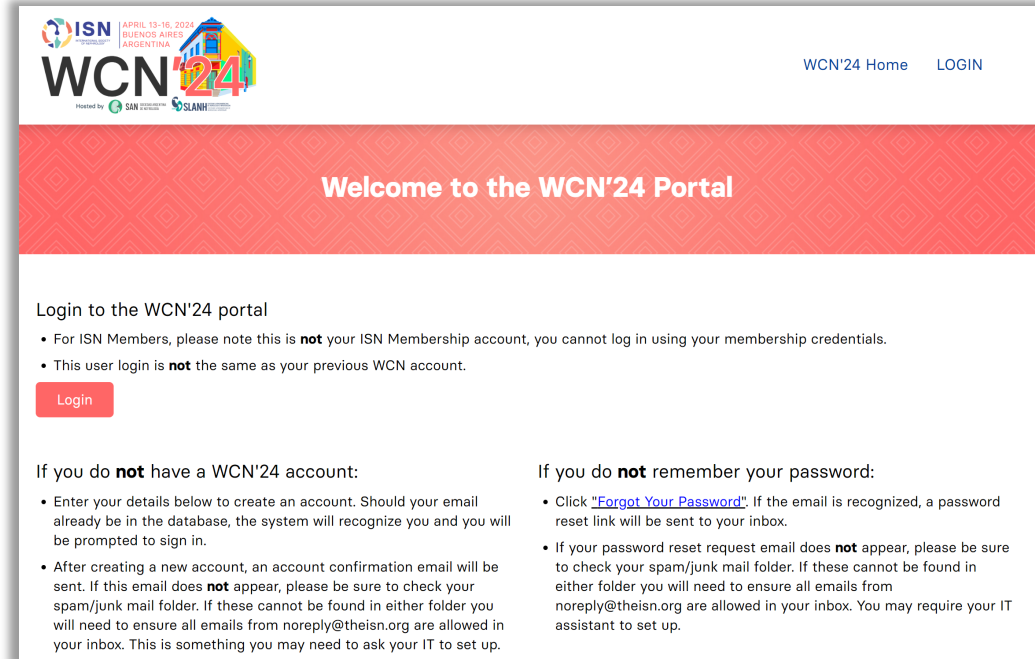
Forms for Additional Orders

Please submit the forms relevant to your booking. Please note that these orders can only go through the official suppliers provided below. For more information, please read 'Additional Orders' section of manual.

Advertising	Badge Scanner	Catering (Available soon)
Podium Branding	Rehearsal Slot	Staff

<https://www.theisn.org/wcn/industry/sponsor-manual/>

Registration Platform



ISN | APRIL 13-16, 2024
BUENOS AIRES
ARGENTINA

Hosted by SAN | SLANH

[WCN'24 Home](#) [LOGIN](#)

Welcome to the WCN'24 Portal

Login to the WCN'24 portal

- For ISN Members, please note this is **not** your ISN Membership account, you cannot log in using your membership credentials.
- This user login is **not** the same as your previous WCN account.

[Login](#)

If you do **not have a WCN'24 account:**

- Enter your details below to create an account. Should your email already be in the database, the system will recognize you and you will be prompted to sign in.
- After creating a new account, an account confirmation email will be sent. If this email does **not** appear, please be sure to check your spam/junk mail folder. If these cannot be found in either folder you will need to ensure all emails from noreply@theisn.org are allowed in your inbox. This is something you may need to ask your IT to set up.

If you do **not remember your password:**

- Click "[Forgot Your Password](#)". If the email is recognized, a password reset link will be sent to your inbox.
- If your password reset request email does **not** appear, please be sure to check your spam/junk mail folder. If these cannot be found in either folder you will need to ensure all emails from noreply@theisn.org are allowed in your inbox. You may require your IT assistant to set up.

<https://wcn24.theisn.org/registrationswcn@theisn.org>

MAIN CONTACTS

Congress Organizers

International Society of
Nephrology (ISN)

• 340 North Avenue, Cranford,
NJ 07016-2496, USA

🔗 www.theisn.org

Charleigh Claire
Business Development Manager

✉ cclaire@theisn.org

Romane Blondel
Business Development
Administrator

✉ rblondel@theisn.org

Freight Forwarder

Kristal Logistics

• Mechelen, Belgium

Wim Poels

☎ +32 (0) 2 7514680

✉ wim.poels@kristal-logistics.com

Venue

Buenos Aires Convention Center
(CEC)

• Av. Figueroa Alcorta 2099
Buenos Aires, Argentina

🔗 www.cecbuenosaires.com.ar

Congress Services

Met Group

• Buenos Aires, Argentina

Florencia Vaccaro Sipes

☎ +5411-5263-MET (638)

✉ florencia.v@metgroup.com.ar

ORGANIZERS AND CONGRESS CHAIRS

Organizers and Hosts



Congress Chair



Masaomi Nangaku
ISN President
Japan

Local Organizing Working Group Chairs



Guillermo Rosa Diez
Argentina

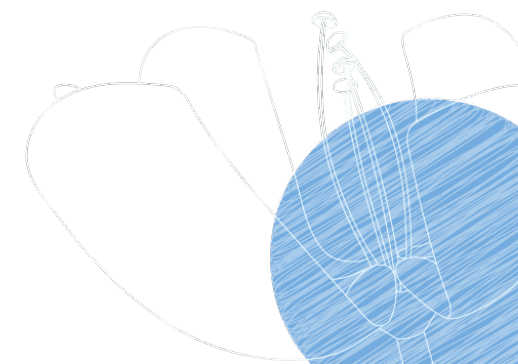


Jorge Rico
Colombia

Scientific Program Working Group Chair



Alessia Fornoni
USA/Italy



PLENARY SESSIONS



Ele Ferrannini

Insights into SGLT2
Inhibitors: A Story of
Discovery



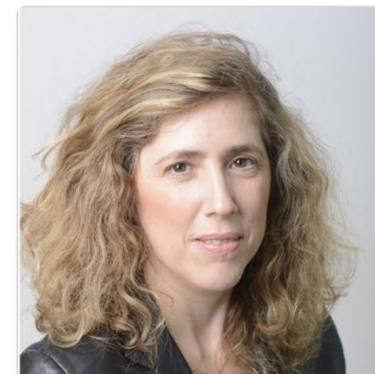
Daniel de Florian

The Origin of the Universe



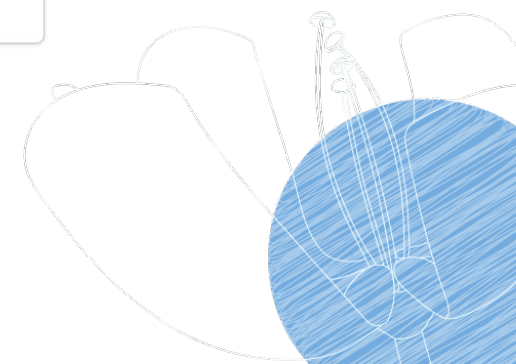
Obiageli Nnodu

CrispCas9 Therapy for
Sickle Cell Diseases: How
Do We Go from Discovery
to Equitable Availability of
Gene Therapy for All?



Michal Rosen-Zvi

Generative AI Revolution in
Medicine



PROGRAM THEMES



Theme 1: Better Kidney Health

Topics covered include preventive and environmental science, population health science, global kidney health, and policy/advocacy.



Theme 2: The Interconnected Kidney

Topics covered include cardiorenal syndrome, cardiovascular disease, hypertension, and epidemiology.



Theme 3: The Kidney Losing Function

Topics covered include dialysis, chronic kidney disease—mineral and bone disorder, anemia, and interventional nephrology.



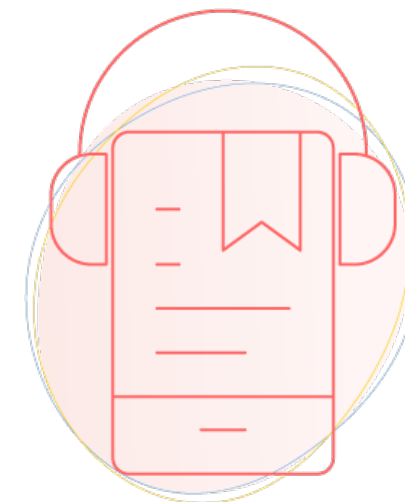
Theme 4: The Kidney Under Challenge

Topics covered include onconeurology and transplantation.

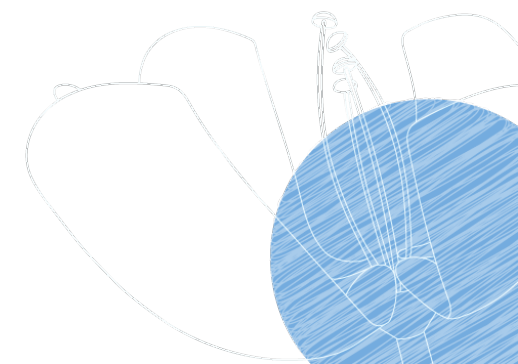


Theme 5: The Smart Kidney

Topics covered include genetics, precision medicine, machine learning/AI, and rare/orphan kidney diseases.



Experience WCN'24 in Your Native Language With Real-time AI Translation of the Scientific Program



PROGRAM AVAILABLE ONLINE

Sunday April 14, 2024

Time	Session						
08:30 am - 09:00 am	Industry Symposium Hall C2			Industry Symposium Hall C3			
09:00 am - 10:30 am	Innovations in Transplantation Hall A	Hands on Big Data Mining for the Nephrologist in 2024 Hall C1	APOL1 Targeted Therapies: Who to Test and Which Disease to Treat? Hall C2	AKI and Critical Care Nephrology in Latin America - By the ISN Young Nephrologists Committee Hall C3	Precise Phenotyping and Treatment Hall C4	Population Health and Strategies to Protect the Fragile Hall D	Translational Discoveries Paving the Way for Innovations in Managing Failing Kidney Complications Hall E
11:00 am - 12:00 pm	Plenary Session 2 Hall A						
12:15 pm - 01:15 pm	Hot Debate: Should a Low Protein Diet (+/- Ketoanalogue Supplementation) Be Part of Advanced CKD Management? Hall A	Transplant Tourism in My Clinic: What Should I Do? ISN-DICG Joint Session Hall C1	Advocacy Workshop: Championing Change Hall C2	Strategies to Reduce Inequity of PD Provision Globally: ISN-ISPD Joint Session Hall C4	The ISN Emerging Leaders and Environmentally Sustainable Kidney Care: The Time is Now Hall D	Onconephrology: Various Flavors of AKI Hall E	
01:45 pm - 02:45 pm	Industry Symposium Hall C1	Industry Symposium Hall C2	Industry Symposium Hall C3	Industry Symposium Hall C4	Industry Symposium Hall D	Industry Symposium Hall E	
03:00 pm - 04:00 pm	A Balancing Act: Your Kidneys and Electrolytes Hall A	Kidney Health for All - Advancing Equitable Access to Care and Optimal Medication Practice: WKD Session Hall C1	Women and Kidney Health Hall C2	Meeting Interventional Nephrology Needs in Low Resource Settings Hall C3	Cardiorenal Syndrome: Updates in the Pathophysiology and State-of-the-Art Treatment Hall D	New Tools to Study Kidney Disease Hall E	
04:30 pm - 05:30 pm	Policy and Advocacy Approaches Hall A	Oral Abstracts Session 1 - SAN Hall C1	Building Competency in Nephrology Education Hall C2	New Developments in CKD Epidemiology Research Hall C4	Kidney Transplantation: State of the Art. ISN-TTS Joint Session Hall D	Salt Substitutes and HTN/CVD Hall E	
05:45 pm - 06:45 pm	Industry Symposium Hall D		Industry Symposium Hall E		Poster Session 1 Main Foyer		

The Professor Donal O'Donoghue, Global Kidney Policy Forum to be held at WCN'24



CONGRESS PROGRAM

April 13, 2024

Pre-congress courses



Welcome reception from 5:30 –
7:30pm

April 14 - 16, 2023

Congress



Scientific program from 9:00am –
6:45pm

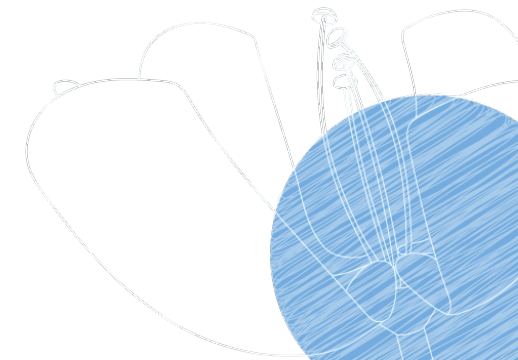
Exhibition
Industry symposia
Poster sessions
Spotlight Stage
Global Kidney Policy Forum
World Kidney Day booth & activities

Until April 2025

On-demand



Open-access recorded
industry symposia





CONGRESS PROGRAM

Saturday, April 13

Courses

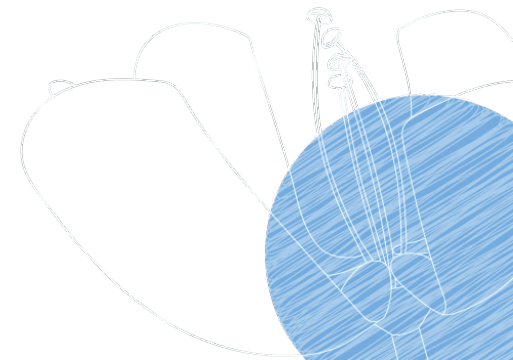
Welcome Reception
from 5:30 – 7:30pm

Sunday, April 14

Monday, April 15

**Tuesday, April 16
Morning**

Scientific Program
Industry Symposia
Spotlight Stage
Exhibition & Posters



EXHIBITION SCHEDULE

April 11

9am – 6pm
Construction for
customized large
booths (36+ sqm)

April 12

9am – 6pm
Construction
for all booths

April 13

9am – 1pm
Construction
for all booths

1 – 5pm
Decoration only

5:30 – 7:30pm
Welcome reception

April 14

10am - 7pm
Exhibition

April 15

10am - 7pm
Exhibition

7 - 9pm
Breakdown

April 16

1 - 6pm
Breakdown

EXHIBITION ACCESS

Time		Access	No access
11-Apr-24			
9:00 - 18:00	Construction reserved for large booths <i>Order will be shared based on final designs</i>	Official contractor (Anselmi) External contractors	Exhibitor badges Delegates
12-Apr-24			
9:00 - 18:00	Construction of all booths	Official contractor (Anselmi) External contractors	Exhibitor badges Delegates
13-Apr-24			
09:00 - 13:00	Construction of all booths <i>All aisles must be cleared and constructions finished by 13:00</i>	Official contractor (Anselmi) External contractors	Exhibitor badges Delegates
13:00 - 17:00	Graphics and decoration only <i>Cleaning services begin at 14:00</i>	Official contractor (Anselmi) Exhibitor badges	Delegates External contractors
17:30 - 19:30	Show times (Welcome reception) <i>Doors open at 17:00</i>	Exhibitor badges Delegates	
14-Apr-24			
08:00 - 10:00	Poster hanging	Official contractor (Anselmi) Poster presenters	Exhibitor badges Delegates
10:00 - 10:30	Final preparations	Exhibitor badges	Delegates
10:30 - 19:00	Show times	Exhibitor badges Delegates	
19:00 - 19:30	Exhibitors to close booths Poster presenters to collect posters	Exhibitor badges Poster presenters	Delegates
15-Apr-24			
08:00 - 10:00	Poster hanging	Official contractor (Anselmi) Poster presenters	Exhibitor badges Delegates
10:00 - 10:30	Final preparations	Exhibitor badges	Delegates
10:30 - 19:00	Show times	Exhibitor badges Delegates	
19:00 - 21:00	Exhibitors to close booths Poster presenters to collect posters Booth breakdown	Exhibitor badges Poster presenters All contractors	Delegates
16-Apr-24			
13:00 - 18:00	Booth breakdown	Official contractor (Anselmi) External contractors	Delegates Exhibitor badges



Contractor
wristbands

March 14



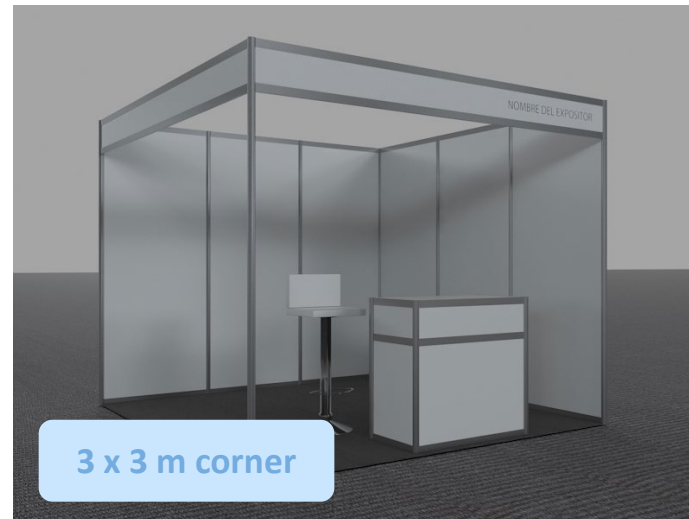
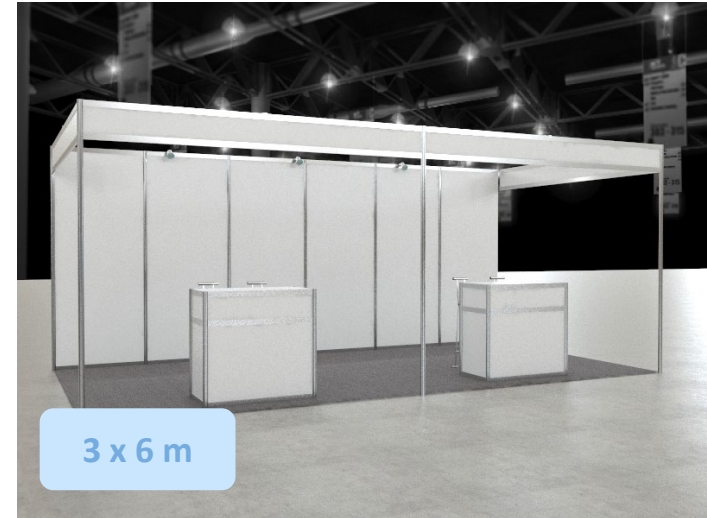
SHELL SCHEME BOOTHS

What is included in the shell scheme package?

Desk	1
Chairs	2
Waste bin	1
Spotlights	3
Electrical outlet	1

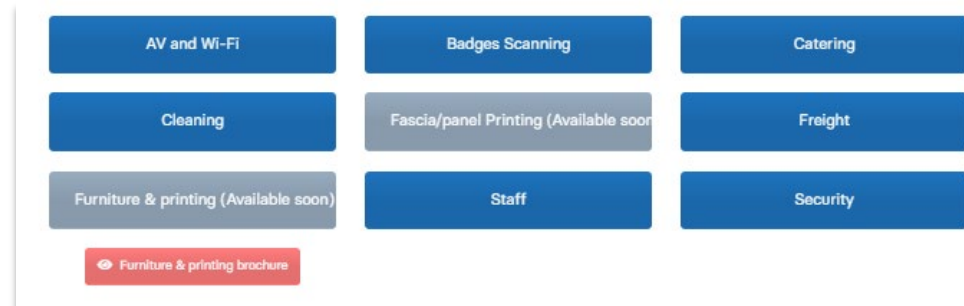
Companies must provide text to display on the front fascia via the form by March 14

Optional: Customize the front fascia with your own design



SHELL SCHEME BOOTHS

Additional orders are required for the following:

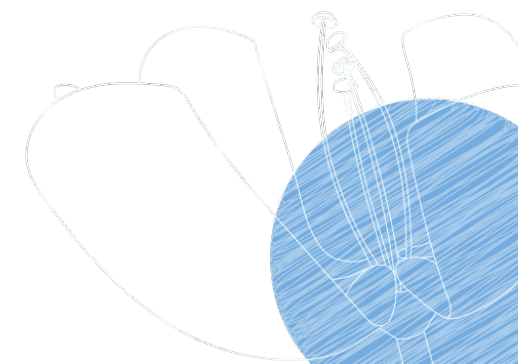


AV & Wi-Fi
Badge scanning devices
Catering
Cleaning
Fascia & panel printing
Furniture
Booth staff
Security

By March 14

Freight

By January 11



CUSTOM BOOTHS

- Submit your plans to rblondel@theisn.org by **March 4**
- Plans must include:
 - Architecture dimensional drawing in scale 1:50 including plan, section, perspectives and views with all their dimensions specifying the material to be used, lighting and any aspects that facilitate the reading of the booth
 - Certified based Argentinian electrician to provide a calculation log 'comande electrica'
 - Risk assessment, to include fire hazards and method statement
 - Booth number + company name
- Extras → order forms available for:

AV & Wi-Fi
Badge scanning devices
Catering
Cleaning
Fascia & panel printing
Furniture
Booth staff
Security

By March 14

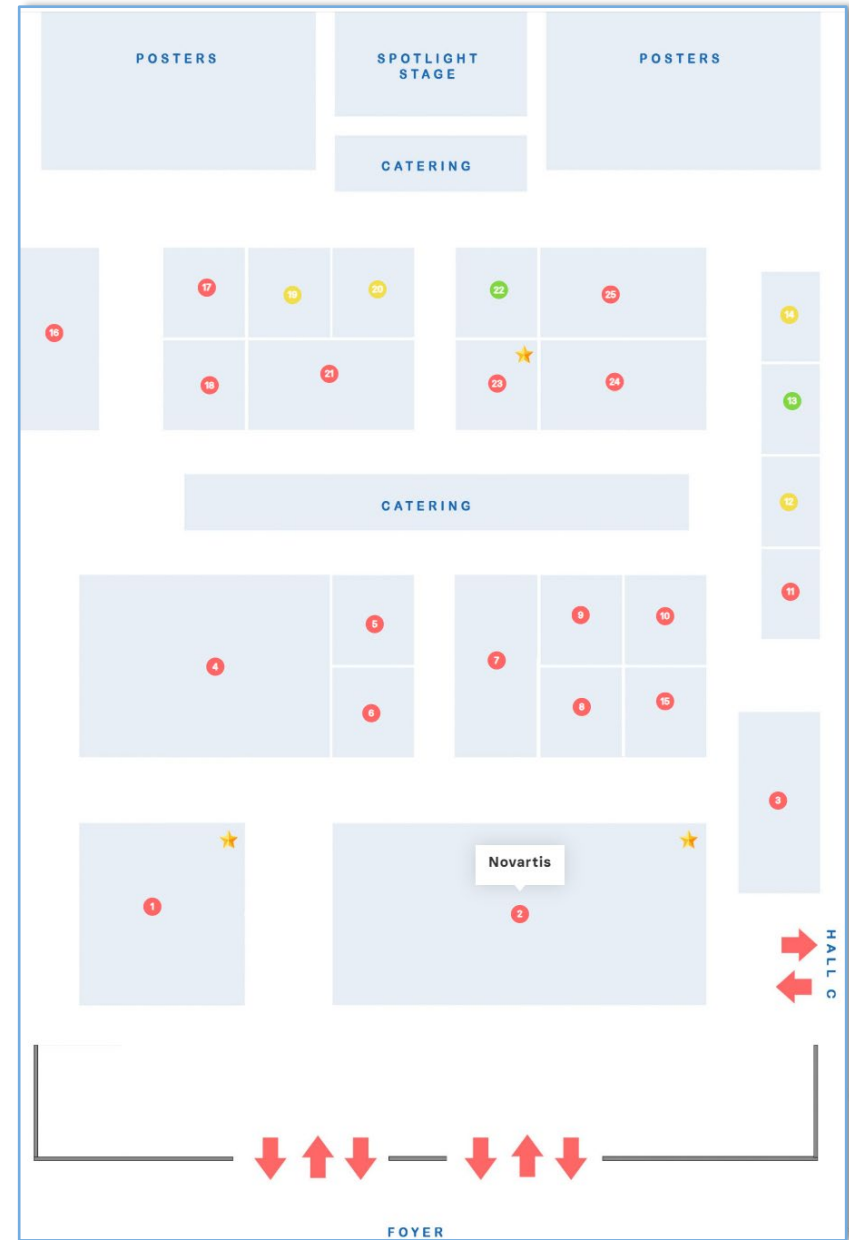
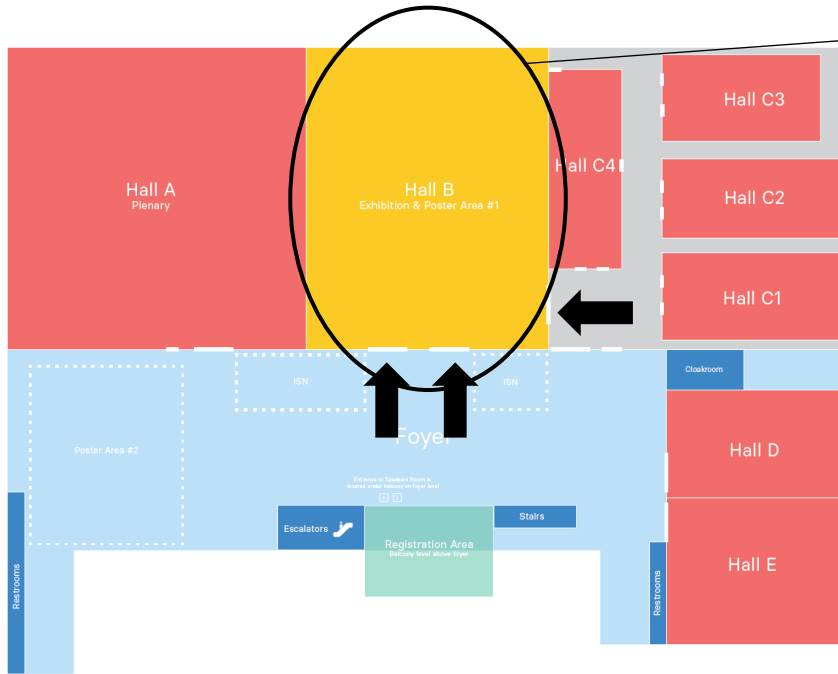
Freight

By January 11

Please make sure to read
all guidelines in the
manual before submitting
your design

FLOORPLAN

<https://www.theisn.org/wcn/industry/exhibition/>



WCN'24 CONGRESS HIGHLIGHTS



Poster Receptions



Kidney Studio



World Kidney Day

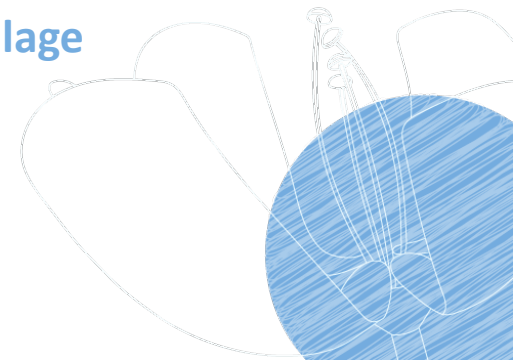


Spotlight Stage



Community Film Event

- & more:
- Table Talks
 - WCN Passport
 - Global Kidney Village



SPOTLIGHT STAGE

Set-up

- Mini stage
- Lectern
- Laptop
- Presenter
- 2 or 3 microphones
- 2 big plasma TV screens
- Casual sitting 30 – 40 PAX
- Camera

Access: 10 minutes pre-session

Schedule/Program

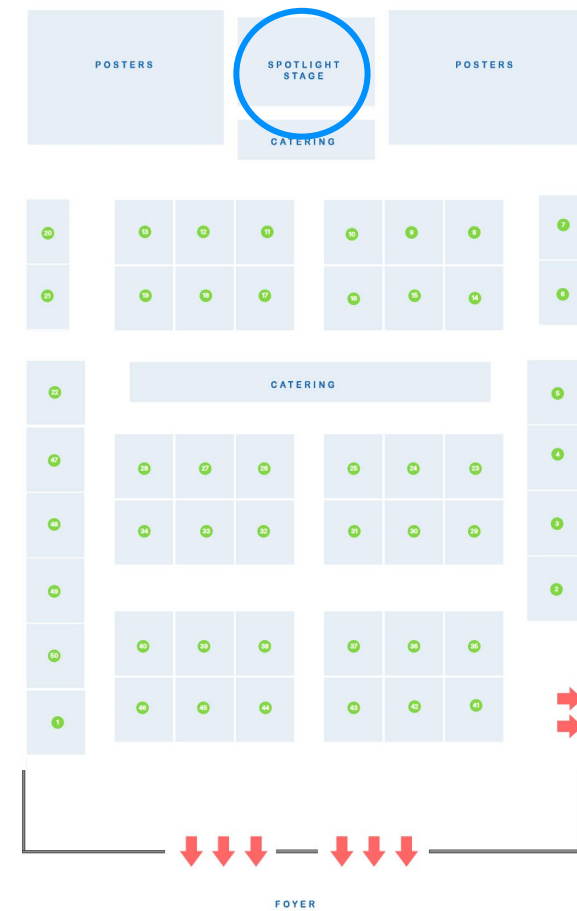
Send to rblondel@theisn.org by **February 9**

- Title
- Faculty
- Description

Full program will be published on WCN website in February

Promotion

- WCN website
- E-blast
- Social media
- Recordings



REGISTRATIONS

Full Congress

Access to all WCN except pre-congress courses

Additional registration can be purchased and added to your group on the registration platform

Displays name, organization and country

Exhibitor

Limited access

Access to the exhibition hall during build-up and breakdown, as well as 30 mins prior to opening hours each day to prepare booths

No access to scientific program or symposia rooms

Displays only organization

Symposium Pass

Limited access

Access to your industry symposium only (not all)

No access to scientific program or exhibition

Displays only organization

WCN'24 REGISTRATIONS

- Registration process:
 - Name on booking form = registration group leader = main contact
 - Group leader will receive a link to provide full details for badges (for full congress registrations only)
 - Full congress registrations not filled by deadline will be cancelled
 - Online registration closes on April 4
- On-site badge collection
 - Group leader will be contacted in March to arrange a collection appointment
 - Group leader collects all badges at the same time

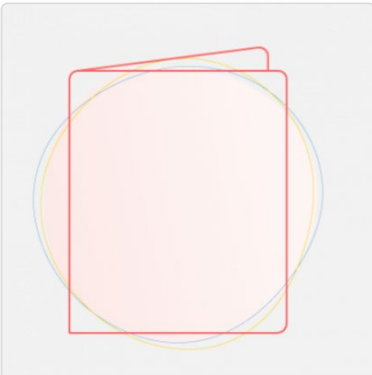
April 1
Deadline



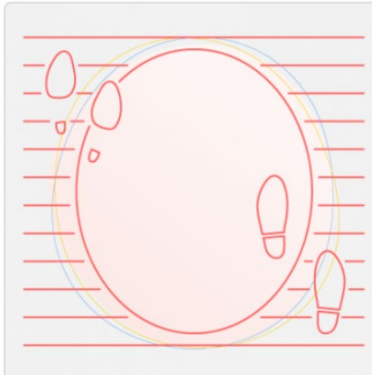


PROMOTION

- WCN promo pack available
 - <https://www.theisn.org/wcn/media/promotional-materials/>
- Additional advertising available for a fee
 - <https://www.theisn.org/wcn/industry/industry-prospectus/#advertising>




Drive Booth Traffic
\$18,000 USD
Special promotional package for exhibitors



Floor Stickers at Exhibition Entrance
\$15,000
Available: 2/2



Social Media cover images



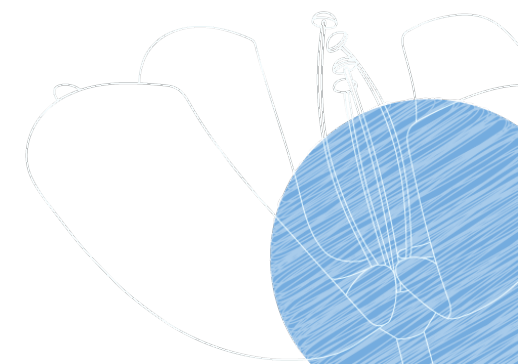
Facebook cover image

X cover image

Social Media templates

Square template English

Facebook/Instagram Stories template English





WCN'24

APRIL 13-16, 2024 | BUENOS AIRES, ARGENTINA



Hosted by
SAN SOCIEDAD ARGENTINA DE NEFROLOGIA
SLANH SOCIEDAD ARGENTINA DE NEFROLOGIA

Open for questions

