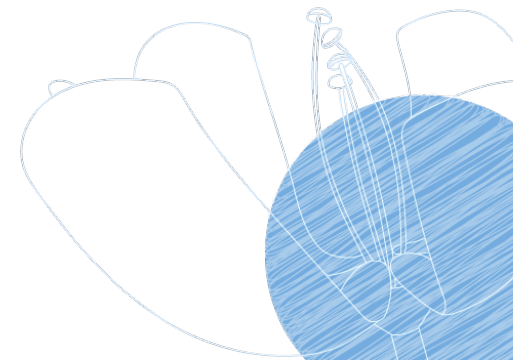




Hosted by  
**SAN** SOCIEDAD ARGENTINA DE NEFROLOGÍA  
**SLANH** SOCIEDAD LATINOAMERICANA DE NEFROLOGÍA E HIPERTENSIÓN  
ASSOCIAÇÃO LATINOAMERICANA DE NEFROLOGIA E HIPERTENSAO

**ISN WORLD CONGRESS OF NEPHROLOGY**  
APRIL 13-16, 2024 | BUENOS AIRES, ARGENTINA

**WELCOME**



# AGENDA

- Main tools & contacts
- Congress details
- Schedule
- Symposium information
- Program
- Promotion
- Spotlight Stage
- Registrations
- Q&A



# MAIN TOOLS TO HELP YOU PREPARE

## Planning Manual

**Welcome to the Industry Sessions Manual**

Please find below the information you will need to plan your symposium or Spotlight Stage session at the World Congress of Nephrology 2024.

Any questions? Reach out to [rblondel@theisn.org](mailto:rblondel@theisn.org)

- Contacts
- Forms
- Important Dates
- Spotlight Stage
- Symposium Information
- Program
- Promotion Included
- Additional Orders
- Presentations
- Registrations
- Q&A Webinars
- Accommodation and Travel

**Mandatory Forms**

It is mandatory for all symposium organizers to fill out the program submission form below before **February 9**.

[Submit program](#)

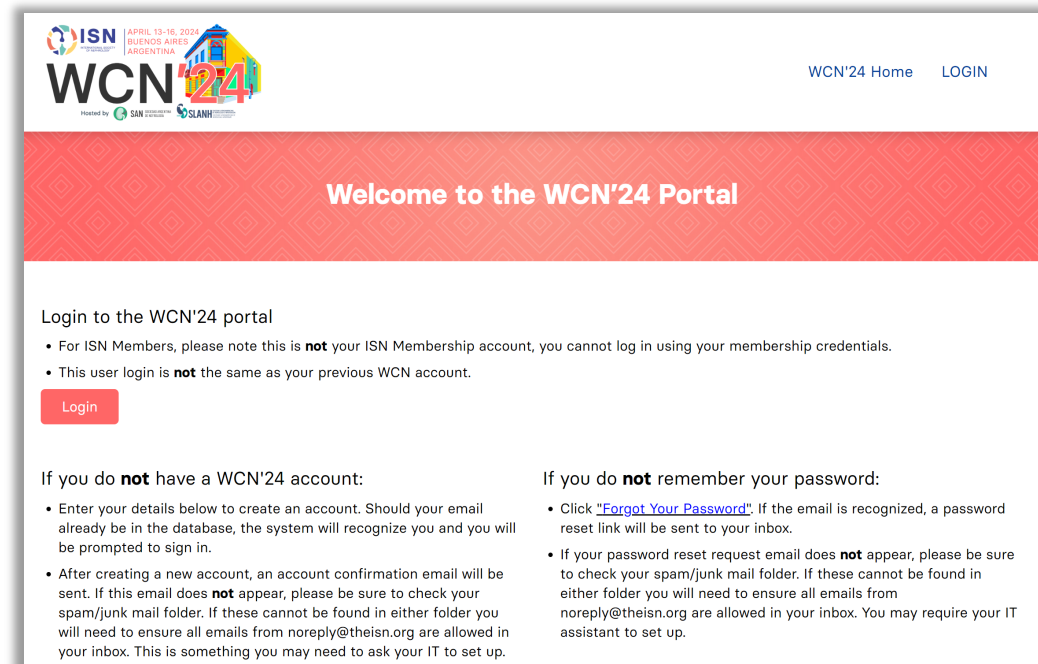
**Forms for Additional Orders**

Please submit the forms relevant to your booking. Please note that these orders can only go through the official suppliers provided below. For more information, please read 'Additional Orders' section of manual.

<a href="#">Advertising</a>	<a href="#">Badge Scanner</a>	<a href="#">Catering (Available soon)</a>
<a href="#">Podium Branding</a>	<a href="#">Rehearsal Slot</a>	<a href="#">Staff</a>

<https://www.theisn.org/wcn/industry/industry-symposia-manual/>

## Registration Platform



ISN | APRIL 13-16, 2024  
BUENOS AIRES  
ARGENTINA

Hosted by SAN | SLANH

[WCN'24 Home](#) [LOGIN](#)

**Welcome to the WCN'24 Portal**

**Login to the WCN'24 portal**

- For ISN Members, please note this is **not** your ISN Membership account, you cannot log in using your membership credentials.
- This user login is **not** the same as your previous WCN account.

[Login](#)

**If you do **not** have a WCN'24 account:**

- Enter your details below to create an account. Should your email already be in the database, the system will recognize you and you will be prompted to sign in.
- After creating a new account, an account confirmation email will be sent. If this email does **not** appear, please be sure to check your spam/junk mail folder. If these cannot be found in either folder you will need to ensure all emails from [noreply@theisn.org](mailto:noreply@theisn.org) are allowed in your inbox. This is something you may need to ask your IT to set up.

**If you do **not** remember your password:**

- Click "[Forgot Your Password](#)". If the email is recognized, a password reset link will be sent to your inbox.
- If your password reset request email does **not** appear, please be sure to check your spam/junk mail folder. If these cannot be found in either folder you will need to ensure all emails from [noreply@theisn.org](mailto:noreply@theisn.org) are allowed in your inbox. You may require your IT assistant to set up.

<https://wcn24.theisn.org/registrationswcn@theisn.org>

# MAIN CONTACTS



## Congress Organizers

International Society of  
Nephrology (ISN)

📍 340 North Avenue, Cranford,  
NJ 07016-2496, USA

🌐 [www.theisn.org](http://www.theisn.org)

Paolo Zavalloni  
Congress Project Manager

✉️ [pzavalloni@theisn.org](mailto:pzavalloni@theisn.org)

Romane Blondel  
Business Development  
Administrator

✉️ [rblondel@theisn.org](mailto:rblondel@theisn.org)

## Venue

Buenos Aires Convention  
Center (CEC)

📍 Av. Figueroa Alcorta 2099  
Buenos Aires, Argentina

🌐 [www.cecbuenosaires.com.ar](http://www.cecbuenosaires.com.ar)



## Congress Services

Met Group

📍 Buenos Aires, Argentina

Florencia Vaccaro Sipes  
☎️ +5411-5263-MET (638)

✉️ [florencia.v@metgroup.com.ar](mailto:florencia.v@metgroup.com.ar)



# ORGANIZERS AND CONGRESS CHAIRS

## Organizers and Hosts



## Congress Chair



**Masaomi Nangaku**  
ISN President  
Japan

## Local Organizing Working Group Chairs



**Guillermo Rosa Diez**  
Argentina

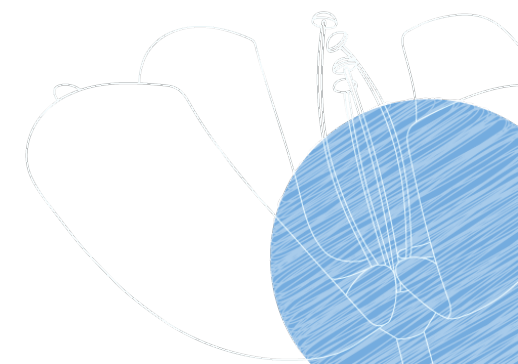


**Jorge Rico**  
Colombia

## Scientific Program Working Group Chair



**Alessia Fornoni**  
USA/Italy



# PLENARY SESSIONS



**Ele Ferrannini**

Insights into SGLT2 Inhibitors: A Story of Discovery



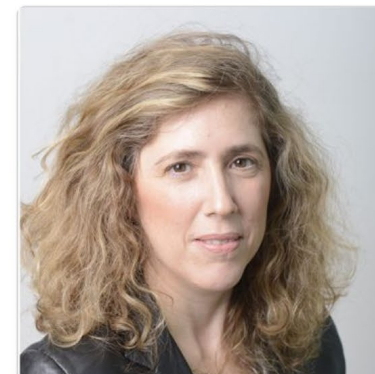
**Daniel de Florian**

The Origin of the Universe



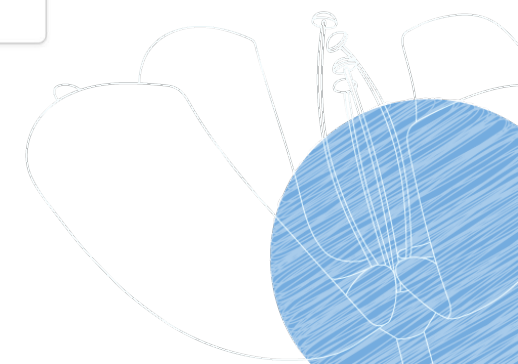
**Obiageli Nnodu**

CrispCas9 Therapy for Sickle Cell Diseases: How Do We Go from Discovery to Equitable Availability of Gene Therapy for All?



**Michal Rosen-Zvi**

Generative AI Revolution in Medicine



# PROGRAM THEMES



## Theme 1: Better Kidney Health

Topics covered include preventive and environmental science, population health science, global kidney health, and policy/advocacy.



## Theme 2: The Interconnected Kidney

Topics covered include cardiorenal syndrome, cardiovascular disease, hypertension, and epi-nephrology.



## Theme 3: The Kidney Losing Function

Topics covered include dialysis, chronic kidney disease—mineral and bone disorder, anemia, and interventional nephrology



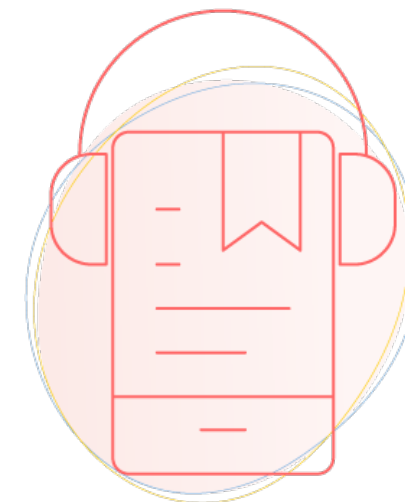
## Theme 4: The Kidney Under Challenge

Topics covered include onconeurology and transplantation.

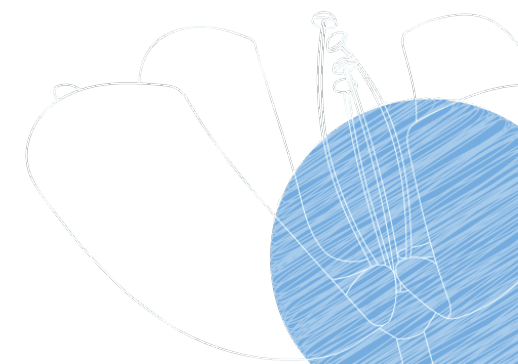


## Theme 5: The Smart Kidney

Topics covered include genetics, precision medicine, machine learning/AI, and rare/orphan kidney diseases



Experience WCN'24 in Your Native Language With Real-time AI Translation of the Scientific Program



# PROGRAM AVAILABLE ONLINE

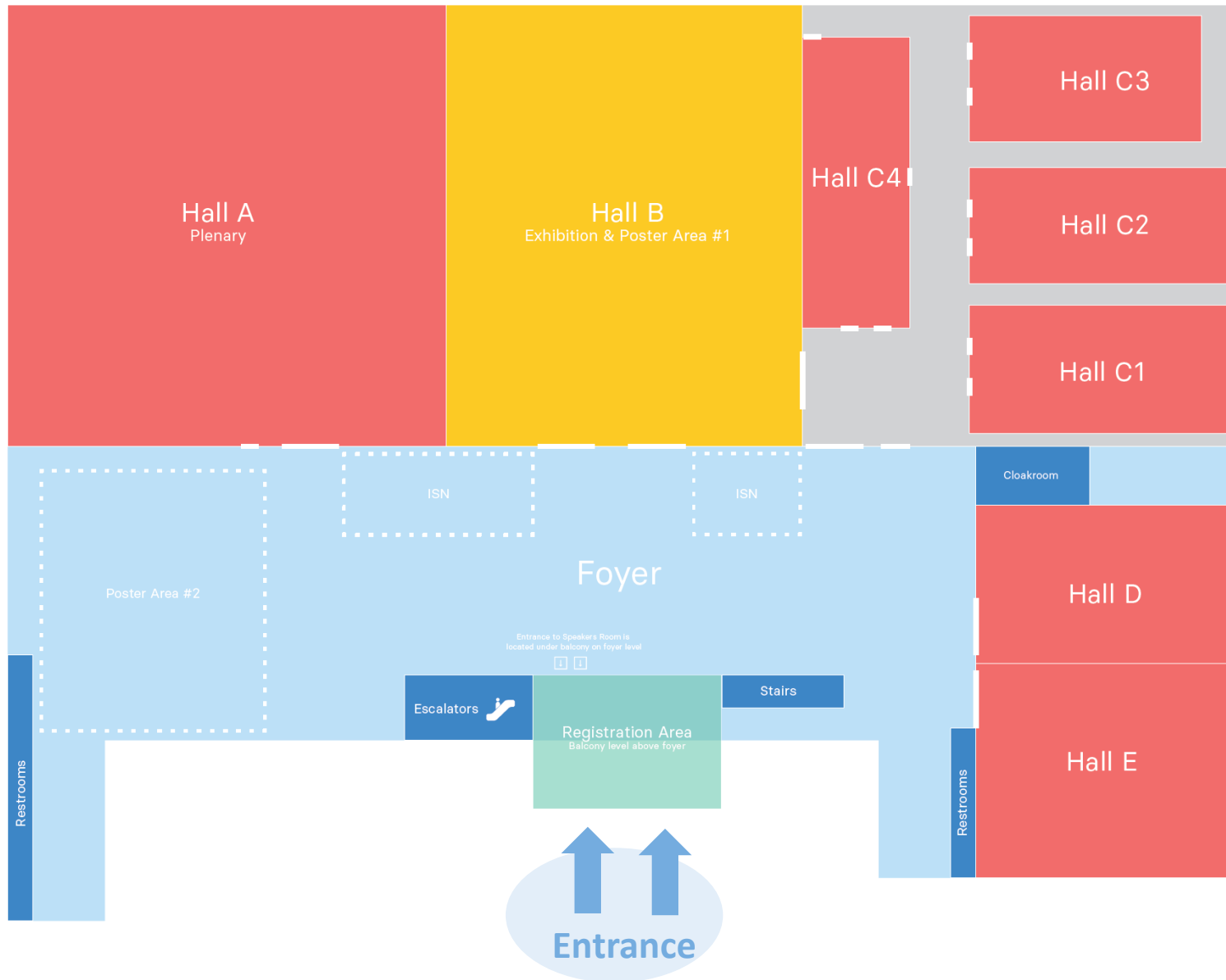
Sunday April 14, 2024

Time	Session						
08:30 am - 09:00 am	Industry Symposium Hall C2			Industry Symposium Hall C3			
09:00 am - 10:30 am	Innovations in Transplantation Hall A	Hands on Big Data Mining for the Nephrologist in 2024 Hall C1	APOL1 Targeted Therapies: Who to Test and Which Disease to Treat? Hall C2	AKI and Critical Care Nephrology in Latin America - By the ISN Young Nephrologists Committee Hall C3	Precise Phenotyping and Treatment Hall C4	Population Health and Strategies to Protect the Fragile Hall D	Translational Discoveries Paving the Way for Innovations in Managing Failing Kidney Complications Hall E
11:00 am - 12:00 pm	Plenary Session 2 Hall A						
12:15 pm - 01:15 pm	Hot Debate: Should a Low Protein Diet (+/- Ketoanalogue Supplementation) Be Part of Advanced CKD Management? Hall A	Transplant Tourism in My Clinic: What Should I Do? ISN-DICG Joint Session Hall C1	Advocacy Workshop: Championing Change Hall C2	Strategies to Reduce Inequity of PD Provision Globally: ISN-ISPD Joint Session Hall C4	The ISN Emerging Leaders and Environmentally Sustainable Kidney Care: The Time is Now Hall D	Onconephrology: Various Flavors of AKI Hall E	
01:45 pm - 02:45 pm	Industry Symposium Hall C1	Industry Symposium Hall C2	Industry Symposium Hall C3	Industry Symposium Hall C4	Industry Symposium Hall D	Industry Symposium Hall E	
03:00 pm - 04:00 pm	A Balancing Act: Your Kidneys and Electrolytes Hall A	Kidney Health for All - Advancing Equitable Access to Care and Optimal Medication Practice: WKD Session Hall C1	Women and Kidney Health Hall C2	Meeting Interventional Nephrology Needs in Low Resource Settings Hall C3	Cardiorenal Syndrome: Updates in the Pathophysiology and State-of-the-Art Treatment Hall D	New Tools to Study Kidney Disease Hall E	
04:30 pm - 05:30 pm	Policy and Advocacy Approaches Hall A	Oral Abstracts Session 1 - SAN Hall C1	Building Competency in Nephrology Education Hall C2	New Developments in CKD Epidemiology Research Hall C4	Kidney Transplantation: State of the Art. ISN-TTS Joint Session Hall D	Salt Substitutes and HTN/CVD Hall E	
05:45 pm - 06:45 pm	Industry Symposium Hall D		Industry Symposium Hall E		Poster Session 1 Main Foyer		

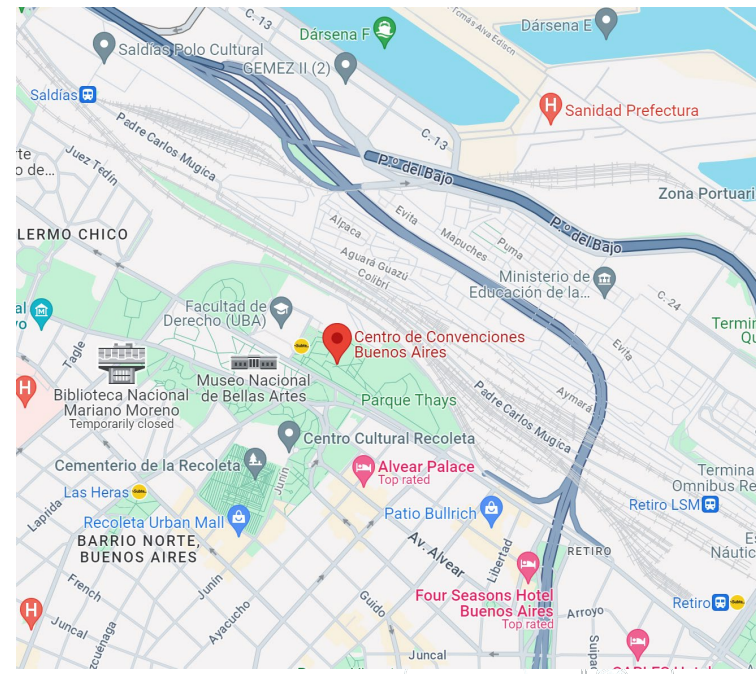
The Professor Donal O'Donoghue, Global Kidney Policy Forum to be held at WCN'24



# VENUE



**Centro de  
 Convenciones Buenos  
 Aires**











# CONGRESS PROGRAM

**Saturday, April 13**

Pre-congress courses

Welcome Reception  
from 5:30 – 7:30pm

**Sunday, April 14**

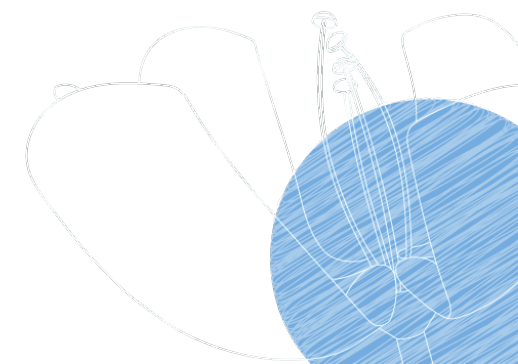
Scientific Program  
Industry Symposia  
Spotlight Stage  
Exhibition & Posters  
Global Kidney Policy Forum  
World Kidney Day booth & activities

**Monday, April 15**

**Tuesday, April 15  
Morning**

**Until April 2025**

Industry symposia  
and spotlight stage  
available open-access  
online



# SYMPOSIA SCHEDULE

Breakfast slots: 8:30am – 9am









Lunch slots: 1:45pm – 2:45pm

Afternoon slots: 5:45pm – 6:45pm

Access to the room will be **granted 30 minutes before** symposium time

→ If you need rehearsal time, you can book a rehearsal slot (limited slots left)

<https://www.theisn.org/wcn/industry/industry-sessions/>

	Sunday, April 14, 2024				Monday, April 15, 2024		
	Hall E 300-350 pax	Hall D 300-320 pax	Hall C4 275-300 pax	Hall C1 200-220 pax	Hall C2 200-220 pax	Hall C3 160-180 pax	Spotlight Stage 20-30" 30-40 pax
08:30 – 09:00					\$25,000 Slot: #1	\$25,000 Slot: #2	
09:00 – 10:30	Sessions						
10:30 – 11:00	Coffee Break						
11:00 – 12:00	Plenary						
12:15 – 13:15	Sessions						
13:45 – 14:45	  	 (C3G)	  (IgAN)	 (IgAN)	 (CKD/Diabetes)	 (TBC)	
15:00 – 16:00	Sessions						\$10,000 Slot: #3
16:00 – 16:30	Coffee Break						
16:30 – 17:30	Sessions						\$10,000 Slot: #5
17:45 – 18:45	\$40,000 Slot #9	\$40,000 Slot: #10					\$15,000 Slot: #6





# SYMPOSIUM PACKAGE

- Rental of the room
- Standard AV equipment and technician support
- Use of speaker preview room
- Session recorded and made available with open-access on-demand for 12 months
- Ability to stream in virtual speakers
- Five (5) symposium-only passes to access your symposium
- Provide program to be displayed in symposia e-book
- Signage (digital screens in exhibition hall and roll-up banner outside meeting room)
- Use of congress logo on invitations and promotional documents (after approval of artwork by organizer)
- Live translation available in 30 languages
- **Catering is included for lunch symposia**
  - We are working on catering options for breakfast symposia



# ON-SITE PLANS

## Symposia rooms

Hall C1, C2, C3, C4, D & E

Access: 30 min pre-sympo

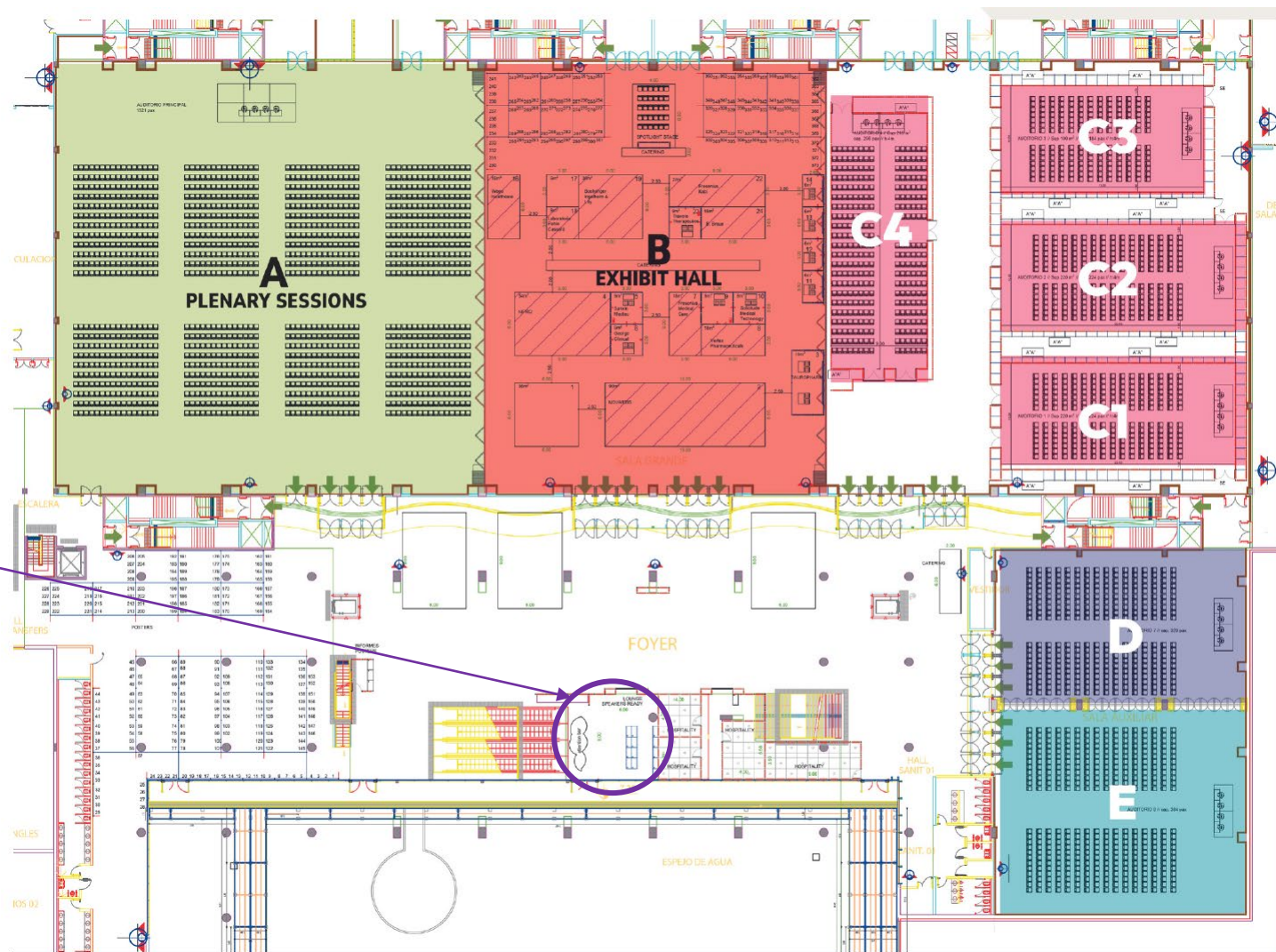
## Speaker preview room

Below balcony; Foyer level

April 13-15 from 8am – 7pm

Upload of presentations at least **2 hours** pre-symposium

Please communicate necessary logistics info to your speakers



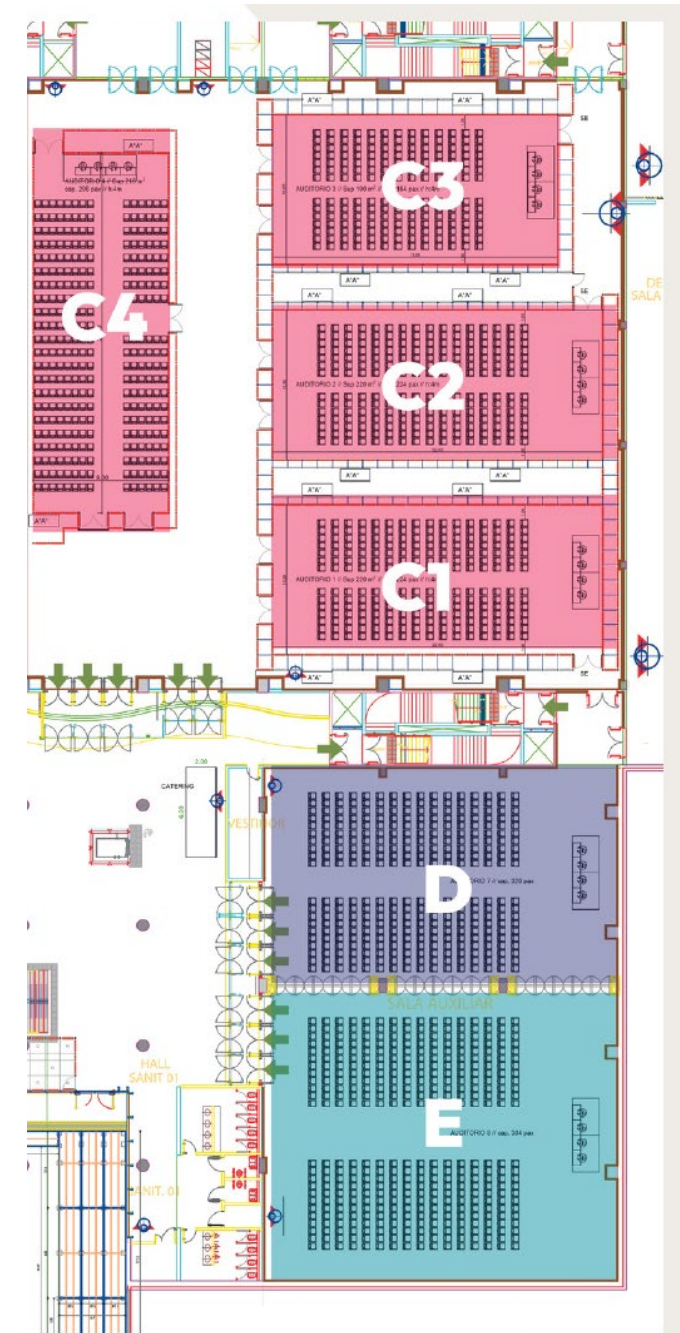


# ROOM SET-UP

- AV set-up in all rooms:

2	Standing microphones
1	Sound system
1	Comfort monitor on stage (timer + presentation view)
1	Speaker podium (can be company branded)
1	Clicker
2	Tables
4	Chairs
1	Camera

- AV set-up **cannot be changed**
- Companies may order podium branding. Additional fee applies.
- Companies may order badge-scanning devices. Additional fee applies.
- Companies may order temporary staff to help with their session. Additional fee applies.



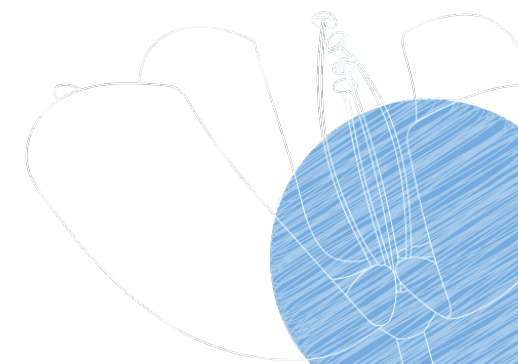




# PROGRAM

SESSION INFO	CHAIR(s)	SPEAKER(s)	KEY WORDS
Session title (max 25 words)	<ul style="list-style-type: none"> <li>Title</li> </ul>	<ul style="list-style-type: none"> <li>Presentation title</li> </ul>	<p>To ensure translation accuracy for all sessions we are asking for keys words that will be used e.g. trial name, drug name, speaker name, study name etc. to log them into the system</p> <p><i>The live translation can be switched off for your session if preferred. In that case put NA in this part</i></p>
Date	<ul style="list-style-type: none"> <li>First name</li> <li>Last name</li> </ul>	<ul style="list-style-type: none"> <li>Title</li> <li>First name</li> </ul>	
Start time (local time)	<ul style="list-style-type: none"> <li>Institute</li> </ul>	<ul style="list-style-type: none"> <li>Last name</li> </ul>	
End time (local time)	<ul style="list-style-type: none"> <li>Country</li> <li>Email</li> </ul>	<ul style="list-style-type: none"> <li>Institute</li> <li>Country</li> </ul>	
Session duration (in minutes)	<ul style="list-style-type: none"> <li>In-person/virtual</li> </ul>	<ul style="list-style-type: none"> <li>Email</li> <li>Start time</li> <li>Duration (in minutes)</li> <li>In-person/virtual</li> </ul>	

If you need to make any edits after submitting please contact the ISN team



# PROGRAM

**February 9**  
Deadline to submit

**February 19**  
Feedback or Upload

**Chair(s)**

7. Title \*

Doctor

Professor

Other

8. First name \*

Enter your answer

9. Last name \*

Enter your answer

10. Institute \*

Enter your answer

11. Country \*

Submission via [online form](#)

**INDUSTRY SYMPOSIA PROGRAM (FRIDAY MARCH 31, 2023)**

SGLT2 Inhibitors: A driving force to improve standard-of-care in CKD Organized by Science Collected. Supported by an unrestricted educational grant from AstraZeneca	SCIENCE COLLECTED
13:00 – 14:00   Room – MR109 (CDHG)	
Advancing care in acute and chronic kidney patients Organized by Baxter Healthcare	Baxter
13:00 – 14:00   Room – BR 1	
Evolving Landscape in IgA Nephropathy Patient Management Organized by Calliditas Therapeutics	calliditas
13:00 – 14:00   Room – PL1	
Chinook Therapeutics: Changing the Course of Kidney Care Organized by Chinook Therapeutics	CHINOOK
13:00 – 14:00   Room – MR110	
C30 and IC-MP30N: Current state of evidence and how to tackle challenges in clinical management Organized by Novartis	NOVARTIS
13:00 – 14:00   Room – MR111	
The Evolving Treatment Landscape in IgA Nephropathy: A Case-Based Discussion Organized by Traverre Therapeutics	TRAVERRE
13:00 – 14:00   Room – MR109 (ABEF)	

**INDUSTRY SYMPOSIA PROGRAM (FRIDAY MARCH 31, 2023)**

**INDUSTRY SYMPOSIA PROGRAM (SATURDAY, APRIL 1, 2023)**

Atypical hemolytic uremic syndrome: closing the diagnosis-treatment gap Organized by Alexion AstraZeneca Rare Disease	ALEXION AstraZeneca Rare Disease
13:00 – 14:00   Room – MR109 (CDHG)	
Optimizing COVID-19 Prevention for Nephrology Patients: Leaving No Patient Behind Organized by AstraZeneca	AstraZeneca
13:00 – 14:00   Room – BR 1	
Non-steroidal MRAs: A new treatment pillar for chronic kidney disease in type 2 diabetes Organized by Bayer	BAYER
13:00 – 14:00   Room – MR109 (ABEF)	
Looking Beyond Glycemic Control: Cardio Renal and Metabolic Benefits of SGLT2 Organized by Boehringer Ingelheim	Boehringer Ingelheim
13:00 – 14:00   Room – PL1	
Understanding the role of complement in IgA nephropathy: Key to unlocking new treatment approaches Organized by Novartis	NOVARTIS
13:00 – 14:00   Room – MR110	

If no revisions from feedback, programs will be uploaded to WCN website as above

# PROMOTION

## Pre-congress:

- Program e-book on congress website.  
*Symposium hosts to provide A4-sized brochure by March 4*
- Social media (Post will include symposia topics, companies' logos and symposia dates/times).
- E-blast

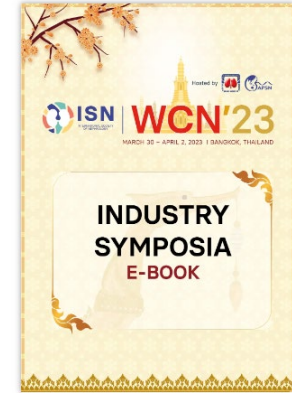
## On-site:

- Exhibition hall screens
- Roll-up banner can be placed outside symposium room (set-up 30 mins pre-symposium and removal immediately after)

## Post-congress:

- E-blast (recorded version)

Additional promotion is available. Get in touch for more information.



🔗 WCN Promo materials

<https://www.theisn.org/wcn/media/promotional-materials/>



# SPOTLIGHT STAGE

## Set-up

- Mini stage
- Lectern
- Laptop
- Presenter
- 2 or 3 microphones
- 2 big plasma TV screens
- Casual sitting 30 – 40 PAX
- Camera

Access: 10 minutes pre-session

## Schedule/Program

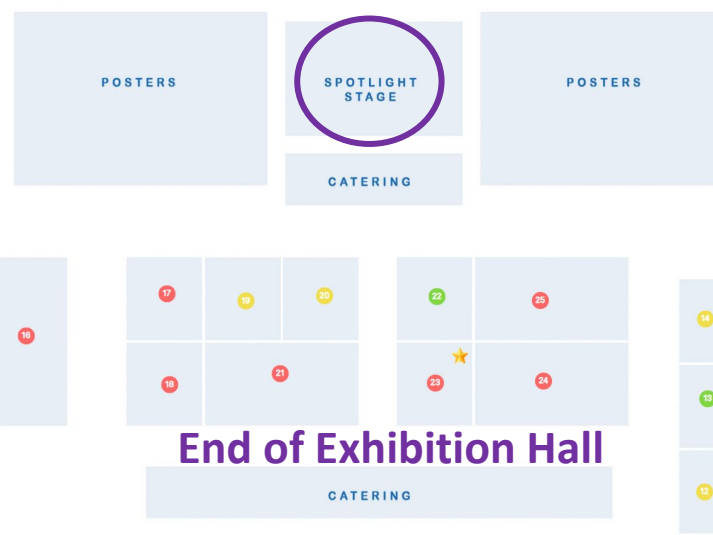
Send to [rblondel@theisn.org](mailto:rblondel@theisn.org) by **February 9**

- Title
- Faculty
- Description

*Full program will be published on WCN website in February*

## Promotion

- WCN website
- E-blast
- Social media
- Recordings





# WCN'24 REGISTRATIONS

## Full Congress

Access to all WCN except pre-congress courses

Additional registration can be purchased and added to your group on the registration platform

Displays name, organization and country

## Sponsor/Exhibitor

Limited access

Access to the exhibition hall during build-up and breakdown, as well as 30 mins prior to opening hours each day to prepare booths

No access to scientific program or symposia rooms

Displays only organization

## Symposium Pass

Limited access

Access to your industry symposium only (not all)

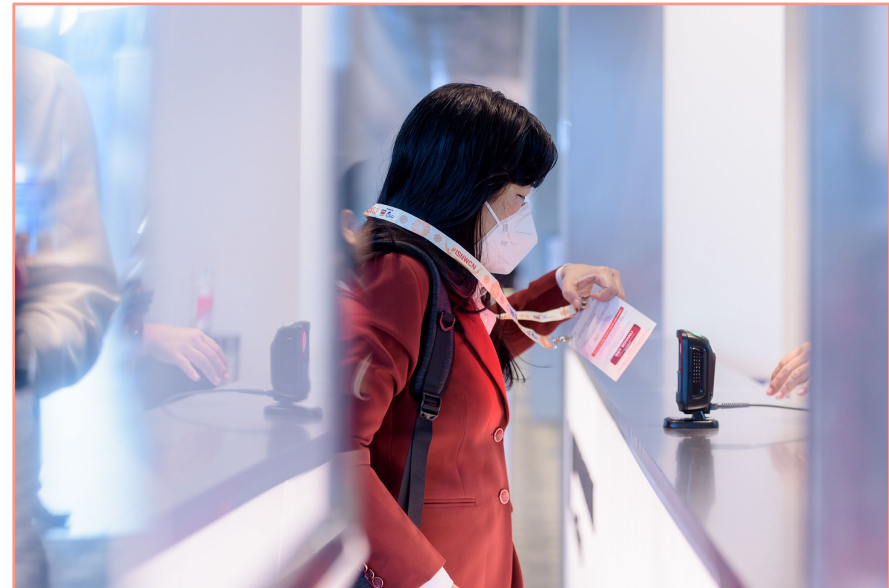
No access to scientific program or exhibition

Displays only organization

# WCN'24 REGISTRATIONS

- Registration process:
  - Name on booking form = registration group leader = main contact
  - Group leader will receive a link to provide full details for badges (for full congress registrations only)
  - Full congress registrations not filled by deadline will be cancelled
  - Online registration closes on April 4
- On-site badge collection
  - Group leader will be contacted in March to arrange a collection appointment
  - Group leader collects all badges at the same time

April 1  
Deadline





**ISN**  
INTERNATIONAL SOCIETY  
OF NEPHROLOGY



**WCN'24**

APRIL 13-16, 2024 | BUENOS AIRES, ARGENTINA



Hosted by

**SAN** SOCIEDAD ARGENTINA  
DE NEFROLOGÍA

**SLANH** SOCIEDAD LATINOAMERICANA  
DE NEFROLOGÍA

# OPEN FOR QUESTIONS

Follow-up questions can also be sent via email to [rblondel@theisn.org](mailto:rblondel@theisn.org) and [pzavalloni@theisn.org](mailto:pzavalloni@theisn.org)