

# Prevalence of chronic kidney disease among elderly patients in North-Eastern Region of Romania: A Cross-Sectional Retrospective Analysis



North Eastern Romania



Single center



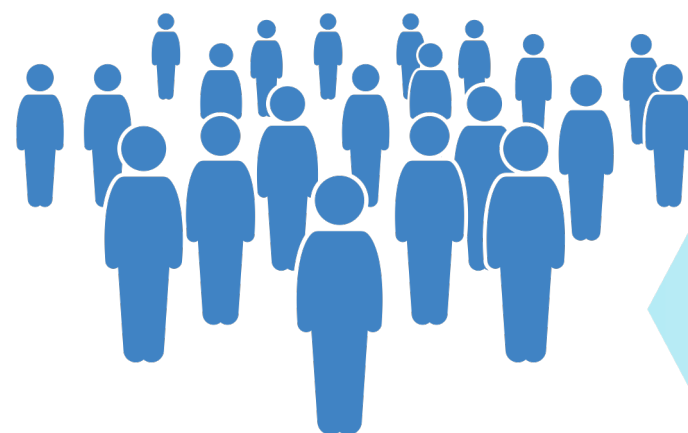
Retrospective analysis



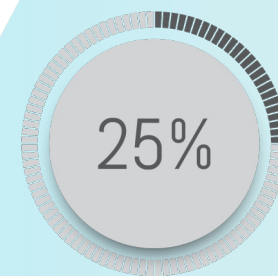
2012 to 2022



more than 65 yrs of age



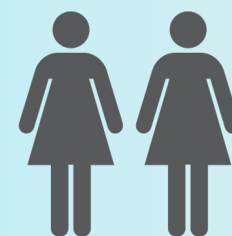
3116 patients  
Mean age - 79.76 years



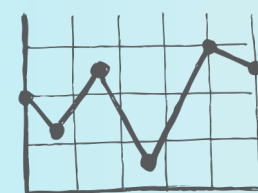
Prevalence of CKD was 25.03%



Higher prevalence in the elderly (75-85 years) 48.5%



Higher prevalence in elderly females 60.3%



Fluctuating patterns:  
Peak during 2018-2019  
Substantial reduction during COVID-19 pandemic

**Conclusion:** Among patients >65 years, CKD exhibited a prevalence of 25.03%, with a higher prevalence among elderly population (48.5%) and with a higher prevalence in females (60.3%). This was the first study in Romania focusing on CKD in the elderly population conducted in a university center serving a population of 4.5 million patients.



Nistor et al.  
VA by @gag\_aggarwal

