



STRATEGIC PLAN

2018-2023

www.theisn.org



PRESIDENT'S MESSAGE – Our Future

Dear fellow ISN member,

Thanks to your contributions and active engagement, our Society continues to be the global reference for worldwide kidney health. Our strategic goal in the next 5 years ensures substantial progress towards a future where all people have equitable access to sustainable kidney health. This will be accomplished by bridging the gaps in available care, by building capacity in healthcare professionals and by collaborating with our partners in the kidney community. Operationally, this will require a revised governance and administration structure and Strategic Plan for ISN that better meet the requirements of a large complex kidney society in a rapidly changing world. We will need a greater emphasis on finding alternative sources of revenue generation, attracting and retaining members from every region of the world, and giving more authority to ISN's regional boards. Together we will build on ISN's successful core activities (campaigns in AKI, CKD and ESKD, capacity building, scientific meetings, publications, on-line education, research projects and advocacy endeavours) with new strategic priorities focussed on financial resilience, organisational transformation and collaborative leadership in global kidney health. Key to the transformation of ISN will be a change in the way leaders and staff interact. Recall that we have little turnover in our professional staff, largely based in our headquarters in Brussels, while ISN's volunteer leaders rotate on and off ExCom, Council, Regional Boards and Committees. The volunteer leaders will concentrate on providing advice, ideas and feedback on specific project elements to the headquarters staff, who will be responsible for designing, implementing and delivering the objectives set out in the Strategic Plan and for ongoing operation of ISN's core activities.

The new structure will enable us not only to better serve our valued members, but also to make sure the ISN remains an effective partner for all those committed to advancing sustainable kidney care in their region, with the ultimate aim of providing the best possible kidney health to everyone on the planet.



David Harris
ISN President 2017-2019

STRATEGIC PURPOSE



Vision

Mission

Values

VISION

**A future where
all people have equitable access
to sustainable kidney health**

MISSION

The International Society of Nephrology is a philanthropic organization dedicated to advancing worldwide kidney health. We do this for all our stakeholders by:



BRIDGING THE GAPS

of available care through advocacy and collaborations with our global partners



BUILDING CAPACITY

in healthcare professionals via granting programs, education and research



CONNECTING COMMUNITY

to develop a stronger understanding of the management of kidney disease

VALUES

Our culture is driven by our belief and understanding of who we are as individuals and as a community, and how we live our lives:

ISN values its role as a **Trusted Leader**.

We work passionately to focus our organization’s activities solely upon improving global kidney health. To maintain our role of Trusted Leader we must be knowledgeable, effective and dependable.

We value being an **Inclusive Partner**.

We recognize that we can only achieve our goals through our network of stakeholders that help build and leverage our capabilities. To be an Inclusive Partner we must be collaborative, transparent and create value for others.

We value acting as an **Adaptive Enabler**.

We modify our work where there are new opportunities to create positive outcomes or improve the service for people that need care. To be an Adaptive Enabler we must be innovative, resourceful and open to change.

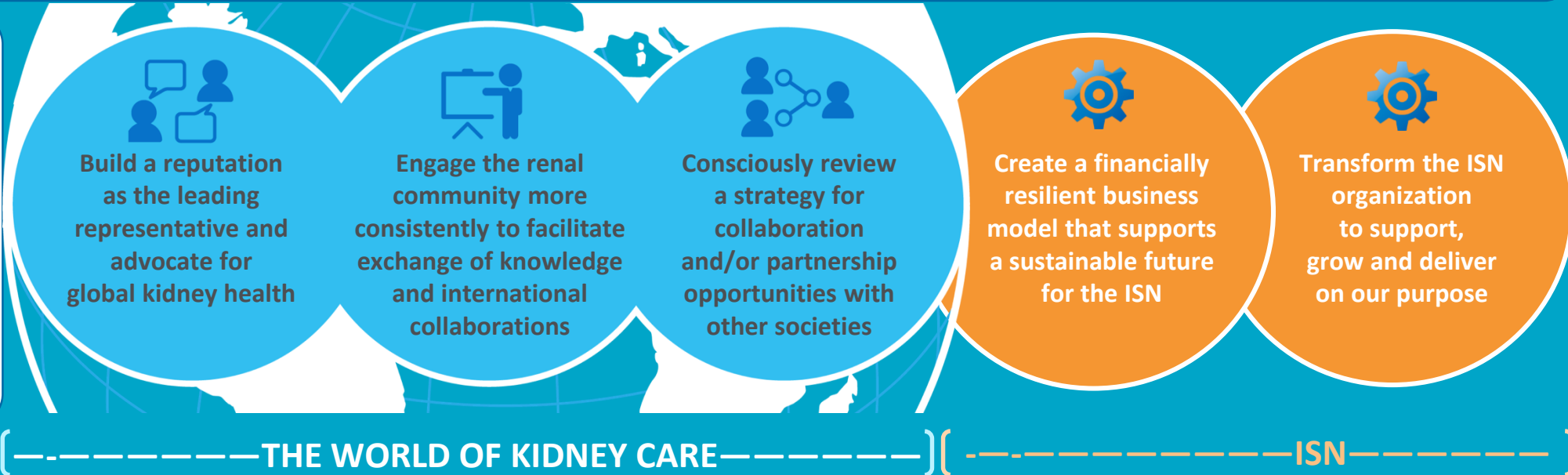


Strategic priorities: The overarching 3-5 Year issues ISN aims to address as an organization

STRATEGIC FRAMEWORK

VISION	A future where all people have equitable access to sustainable kidney health
MISSION	Bridging the gaps of available care through advocacy and collaborations with our global partners Building capacity in healthcare professionals via granting programs, education and research Connecting Community to develop a stronger understanding of the management of kidney disease
VALUES	Trusted leader, inclusive partner, adaptive enabler

PRIORITIES



ISN STRATEGY



**BRIDGING
THE GAPS**



**BUILDING
CAPACITY**



**CONNECTING
COMMUNITY**



ORGANIZATIONAL EXCELLENCE