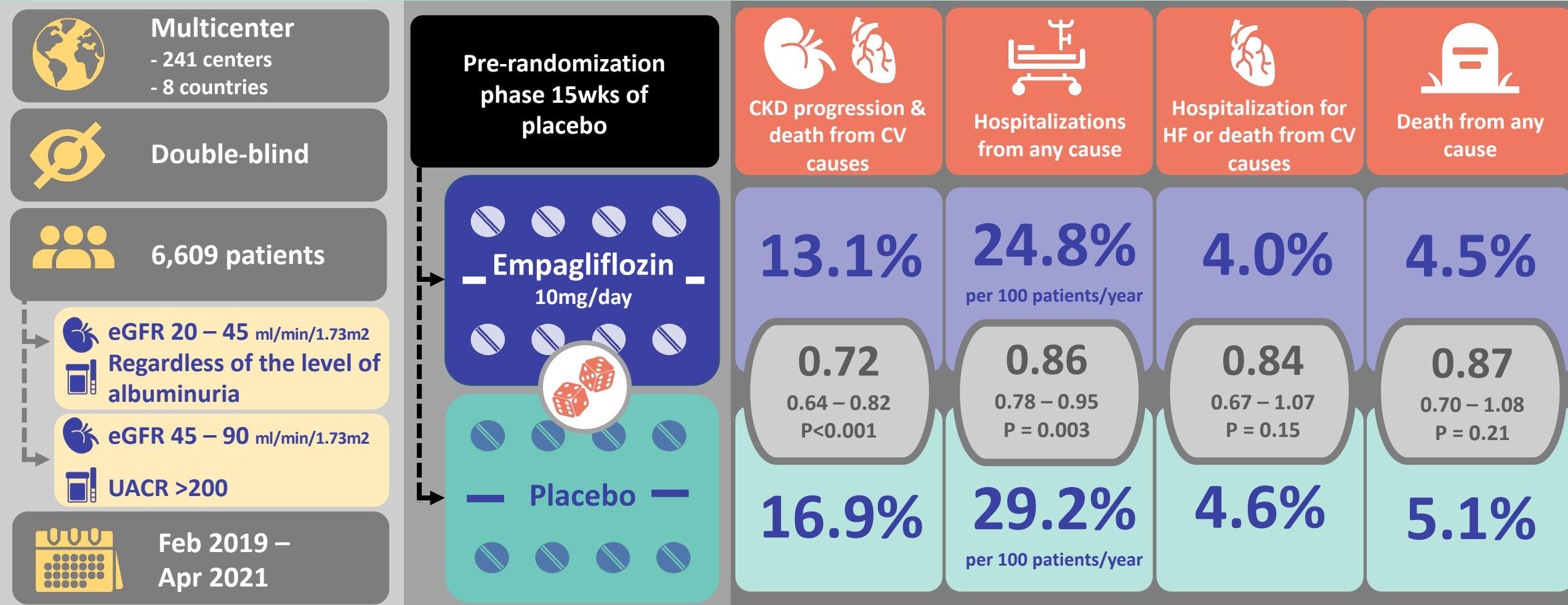


Empagliflozin in Patients with Chronic Kidney Disease (EMPA-KIDNEY)



Conclusion: among a wide range of patients with chronic kidney disease who were at risk for disease progression, empagliflozin therapy led to a lower risk of progression of kidney disease or death from cardiovascular causes than placebo.

Reference: EMPA-KIDNEY Collaborative Group. (2022). Empagliflozin in Patients with Chronic Kidney Disease. *New England Journal of Medicine*.