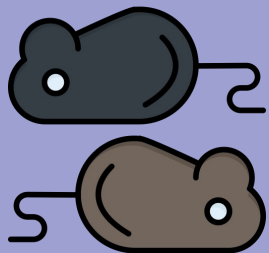
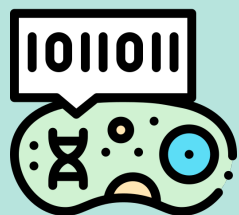


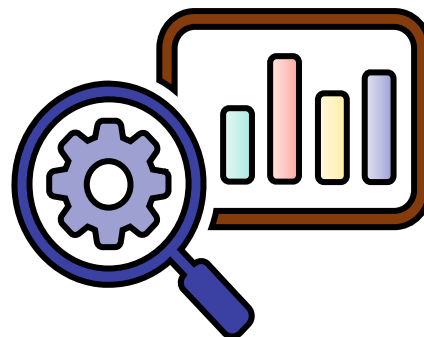
TRANSFORM. Controls and analysis in preclinical models of kidney disease



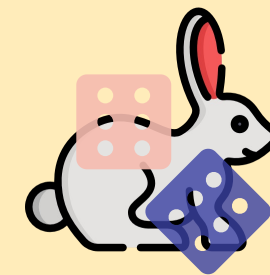
Control groups must be used in preclinical studies of kidney disease
Justification and detailed reporting of controls are **mandatory**



Consider whether an experiment involving animals can be performed using **organoids** or **organs-on-a-chip**



Use **randomization** whenever possible



Avoid retrospectively combining small discrete experiments
Into a single larger group
Prospectively combining experiments may be a suitable approach in specific situations

