

TRANSFORM. Evaluation of Kidney Disease Model



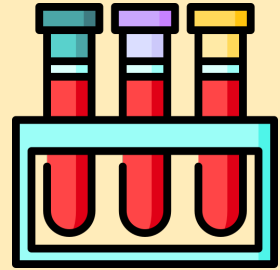
Studies of new therapies should include:



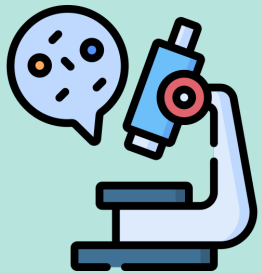
- Assessment of appropriate markers
- The effect of the compound on its target or pathway affected

To assess kidney function:

Use SCr (serum creatinine) level and ideally one other measurement appropriate to the species and preclinical model of the disease



Histologic, fluid-phase, tissue-phase biomarkers and pathways should be studied, as appropriate to the disease and the model(s) chosen



Assess any alterations to **systemic events** that may **initiate and perpetuate injury**

