

# TRANSFORM. Selection of Disease Model

Use animal models that express and regulate the target or targeted pathway in the same way it is expressed and/or regulated in patient



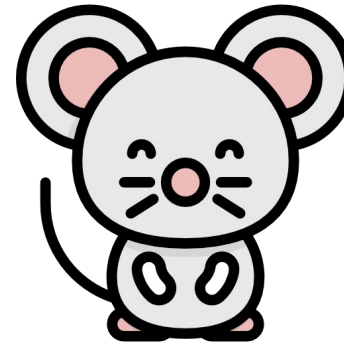
Animal models should mimic the mechanism(s) of disease or repair in patients



Consider the sex of animals, but sex as a biological variable may not be obligatory to analyze



Consider the phase of life of animals



**Statement: Animal-model standardization is important**

Nangaku M et al. International Society of Nephrology first consensus guidance for preclinical animal studies in translational nephrology. *Kidney International*. 2023. <https://doi.org/10.1016/j.kint.2023.03.007>

Infographics by:  
Mythri Shankar, MD,DNB

 @nephromythri