


Diabetes and Kidney Disease

Kidney Disease

840
million

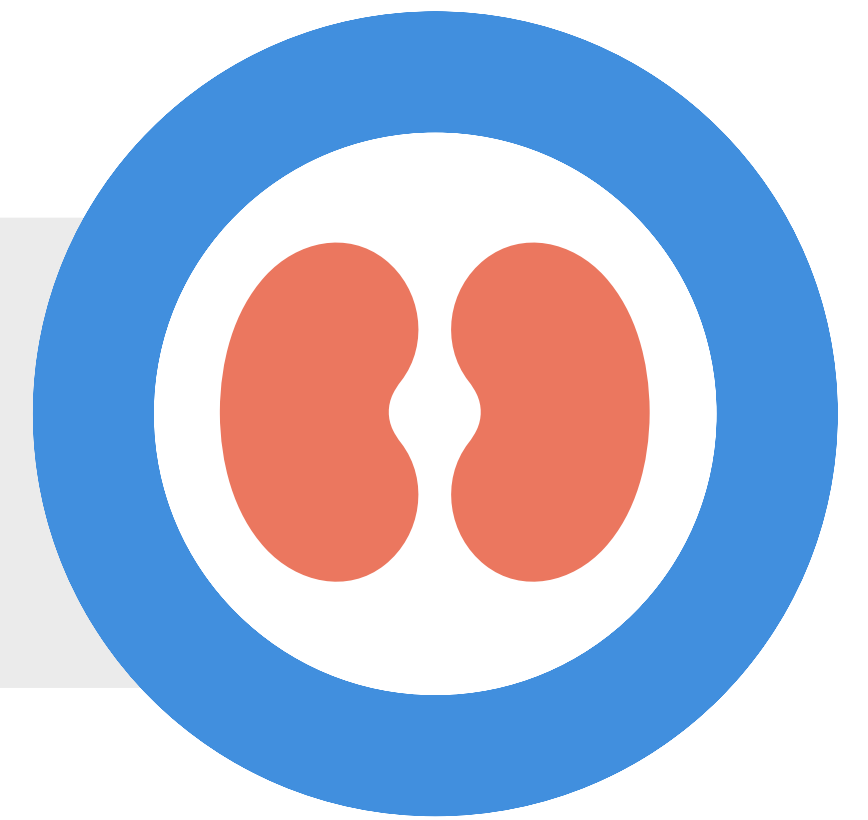


Diabetes

537
million



large burden in low and lower-middle income countries



WKD is a global annual campaign to raise kidney health awareness



awareness



WDD is a global annual campaign launched in 1991 in response to the escalating diabetes burden

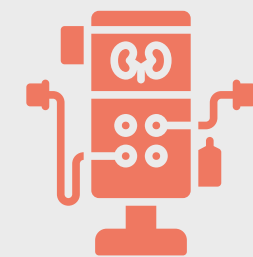
Kidney disease

10%

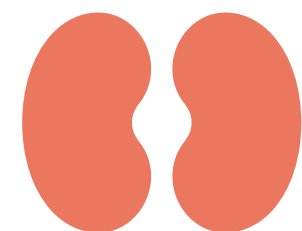
of the population worldwide is affected by **CKD**



Kidney disease can affect people of all races and ages



5.4 million people on dialysis by 2030



Diabetes sympt



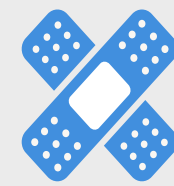
Excessive thirst



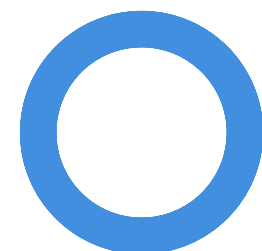
Frequent urination



Lack of energy



Slow healing wounds

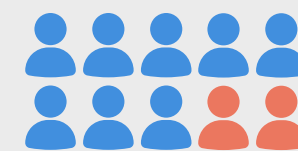


Kidney disease and diabetes

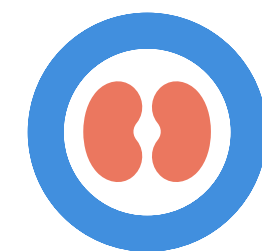


Diabetes is the leading cause of kidney disease worldwide

The prevalence of **kidney failure** is up to **10x** higher in people with **diabetes**



More than **80% cases of kidney failure** are caused by diabetes, hypertension, or a combination of both



Kidney disease and diabetes



Rise in serum creatinine



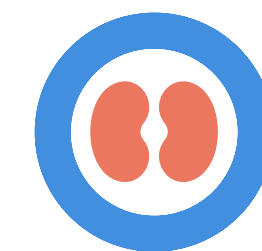
Albumin/protein in urine



High blood pressure



80% w/retinal involvement



Strategies



Education programs



Affordable access to care



Diseases awareness



Blood pressure control



Glucose control



No smoking



Albuminuria screening



Physical activity



References:
 1. IDF Atlas 9th edition 2019 Aviles-Santa et al Current Diabetes Reports (2020) 20:62
 2. Renewing the Fight: A Call to Action for Diabetes and Chronic Kidney Disease, July 2023
 3. IDF-ISN Webinar: Renewing the Fight: A Call to Action for Diabetes and Chronic Kidney Disease <https://academy.theisn.org/products/idf-isn-webinar-renewing-the-fight-a-call-to-action-for-diabetes-and-chronic-kidney-disease>
 4. ISN GKHA 3rd. edition 2023. Johnson, David, et al.