

The ISN leads the International Network of Chronic Kidney Disease cohort studies (iNET-CKD), bringing together independently funded CKD cohort studies worldwide. This collaboration helps improve our understanding of CKD progression and its outcomes.

82,915 patients



26 cohorts



Most cohorts are still following up participants

worldwide  
representation



4C

C-STRIDE  
CanPREDDICT  
CKD-JAC  
CKD-REIN  
CKDopps Brazil

CKDopps Germany  
CKDopps US

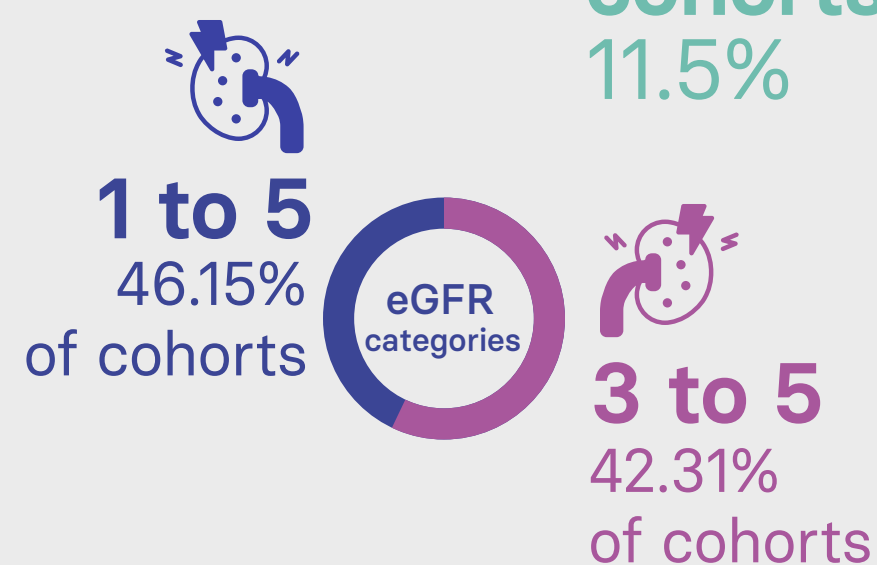
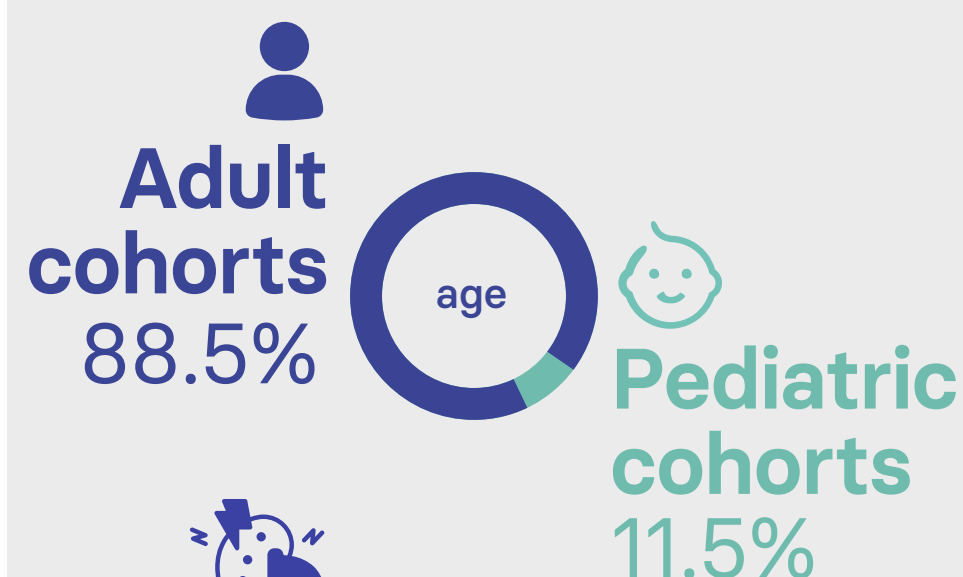
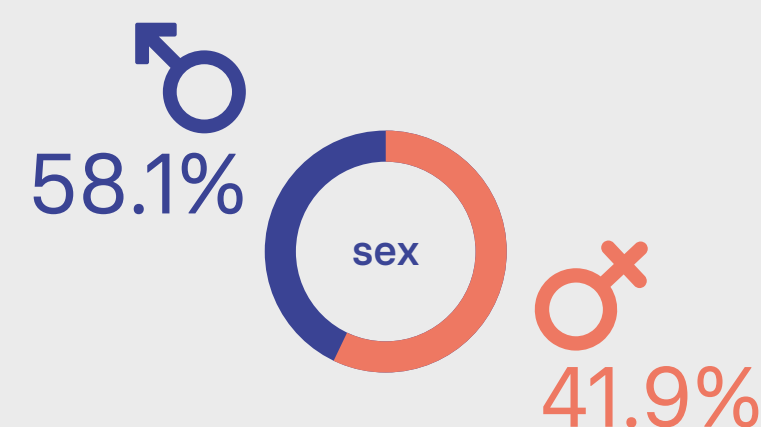
CKiD

CORE CKD  
CRIC  
EQUAL

GCKD  
ICKD  
KNOW-CKD  
KNOW-ped CKD  
MMKD  
NRHP-URU

NURTURE-CKD  
PECERA  
PROGRESER  
PROVALID  
PSI BIND-NL  
RRID  
SKS

## Demographics



## Comorbidities Captured



CVD  
Heart failure  
Coronary artery disease  
Peripheral arterial disease  
Atrial fibrillation  
Stroke

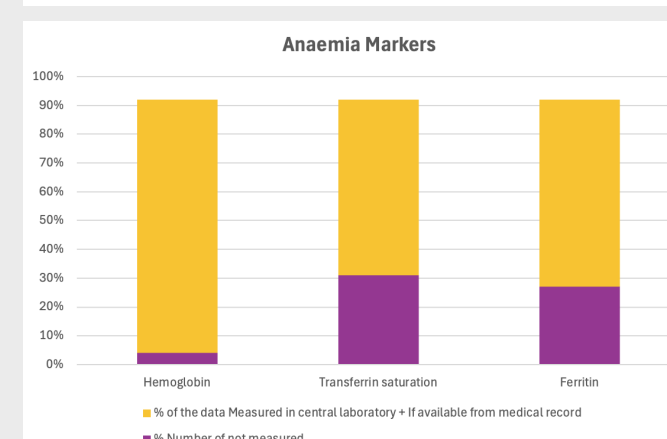
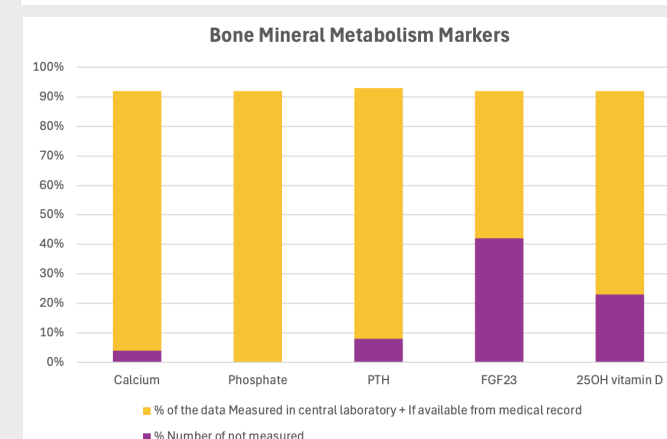
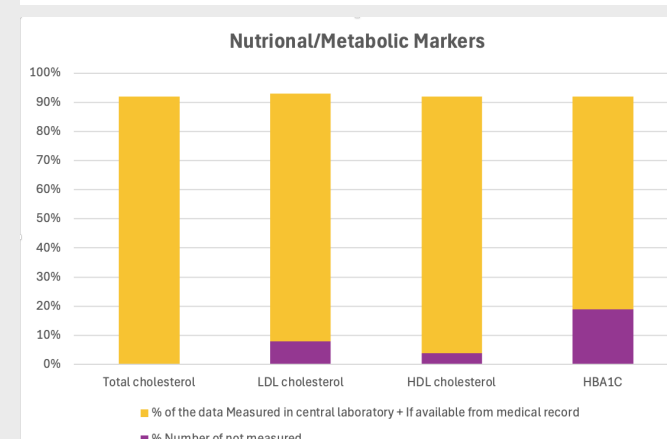
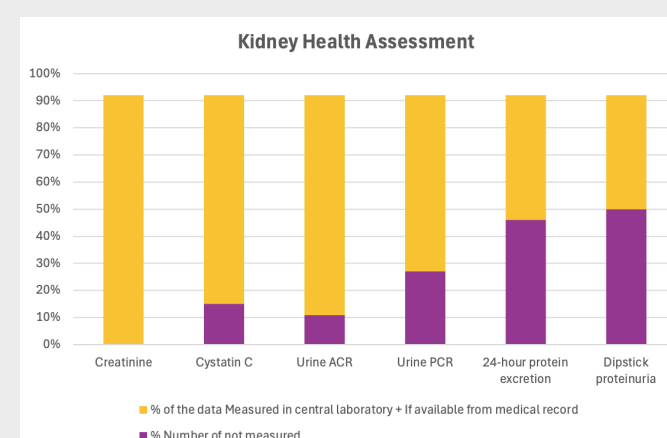


Diabetes



Other:  
Cancer  
Chronic liver disease  
Chronic lung disease  
Thyroid disease

## Laboratory data captured



## Medications captured

Anti-hypertensives



RAAS inhibitors



Lipid lowering therapies



ESA therapies



Oral or IV iron



Antiplatelet agents



Anticoagulation agents



Analgesics

## Outcomes

Clinical

Hospitalization



Mortality



Kidney failure



Patient reported

Functional status



Quality of Life



SF36 & DSI

## Biosamples Available

